



PATHOLOGY NEWS

Dear Colleagues:

This issue of the newsletter finds us in almost the middle of the academic year and preparing for important cultural and religious holidays. The Department continues its progress towards excellence in the clinical services, facilitating pathways of discovery and new knowledge in basic and translational research and setting standards of performance that are difficult to match by most other academic departments. The efforts of many of you in submitting new applications to NIH in response to the challenge grants has paid off and several new projects have been initiated. The clinical diagnostic services continue to integrate the activities of multiple hospitals while maintaining the same standard of excellence across the board. We are expanding our teaching efforts in the school of medicine and in the graduate program. Our teaching of residents and fellows is also following very high standards that should help us as we recruit for next year. I am taking this opportunity to thank you all for your outstanding endeavors and the success of your efforts and to wish you the best in the upcoming holidays.

Sincerely yours,

George K. Michalopoulos, M.D., Ph.D.
Professor and Chairman
Department of Pathology



"When a distinguished but elderly scientist states that something is possible, he is almost certainly right. When he states that something is impossible, he is very probably wrong. "

Arthur C. Clark
(Clark's first law)
English Physicist and
Science Fiction Author
(1917-)



Special Points of Interest

Administrative Update
page 2-3

Residency, Fellowship and
Medical Student Program
Update
page 4

Summer Undergraduate
Research Program
page 5

Cellular and Molecular
Pathology Program
page 6

Division of Hematopathology
and Faculty Highlights
page 7-8

The Mass Spectrometry Plat-
form (MSP) Laboratory
Page 9

Presentations
page 10-11

Graduate Student and
Fellow Highlights
page 12

Seminars & Publications
page 13-17

Personal News
page 18



ADMINISTRATIVE OFFICE UPDATE



A Note From Payroll:

I would like to remind everyone that the payroll deadlines for each month are very early in the month. The paperwork is due one week prior to deadline in the Dean's office for processing. If we miss this deadline we are charged a service fee to process for the check. If this happens, I will be asking you to supply an account number to cover this expense. Otherwise, this employee will not receive a paycheck until the following month.

SUPERVISORS OF WORK STUDY/STUDENT WORKERS: All timesheets for your students are due into my office on the 10th of each month. Students will project the hours they will work up to the 15th of each month. Adjustments will be made the following pay period. **IT IS YOUR RESPONSIBILITY TO SEE THAT THEIR HOURS ARE TURNED IN ON TIME!**

If a student does not turn in their hours on time, they will not be paid until the following month! Payroll submission has been delayed several times while I attempt to "track down" their timesheets.

NOVEMBER/DECEMBER timesheets: An e-mail was sent out to all students and their supervisors reminding them that the **December timesheets are due to me no later than November 20th**. The University pay day for November will be Monday, November 30, 2009. The December University pay day will be Friday, December 11, 2009. However, keep in mind that as in the past, the checks are dated for December 31, 2009. Only the students will have live checks that day.

VISA UPDATE:

Nicole Paterline will handle all staff and faculty visa issues for the department. Her telephone number is 648-1230 and her e-mail is: paterlinena@upmc.edu. Please contact her directly if you have any questions or need to have your current visa extended. You must contact her 4 months prior to the expiration of your J-1 visa and 6 months prior to your H-1B expiration.

A few reasons to visit the Payroll Office:

To get your pay stub – Even though you may have direct deposit, your stub provides proof of income and provides a list of your deductions. **These are available on the last working day each month in Room S-417 BSTWR between the hours of 1-4:00 p.m.**

Change in name or address – If you change your name due to marriage or divorce, you must change it with Social Security first. Bring your updated card to the Payroll Office. Forms are available if you should change your address.

Foreign Faculty/Staff/Students - You should come by my office if:

- You have received your Permanent Resident "green" card
 - You have recently received your authorization to work cards
- Your current visa has been extended. Please bring copies of the approval notice or new DS-2019.

"Once again, we come
to the
holiday season, a
deeply religious
time that each of us
observes, in his own
way, by going to the
mall of his choice." ~

Dave Barry



Resignation - Faculty should submit a *resignation* letter to Dr. Michalopoulos and Division Director. Staff should give a copy to your supervisor, which should include your final date of employment. **This should be done within 24 hours after you have informed your Supervisor in order to process your paperwork.** Be sure to include your forwarding address in order for your W-2 form to be forwarded to the correct address.

To Hire New Employees - Faculty wishing to hire staff positions should initiate this process through the Payroll Office. This includes foreign recruits also.

Medical Leaves - If you are going on leave or have just returned from a leave (personal or FMLA) you must let me know in order to get your paperwork in order.

Tracking of Vacation/PH/Sick Time - **For staff, turning in your time sheet each month is mandatory for accurate vacation and sick time records.** Beginning January 1, 2010 the University will be implementing PRISM TRKS an internet based time record system for all staff. This will replace the existing paper timesheets. This system will automatically track sick and vacation accruals each pay period and these will be printed on your monthly pay advice. Additional information will be made available within the coming weeks.

I can be reached at 648-1038 if you have any questions/concerns. **Please call my office first to schedule an appointment before “stopping by”.** This will ensure that I’ll be available to discuss your issues/concerns.

Carolyn Nolte, Payroll Coordinator



Seth Love, MBBCh, Ph.D.
Professor of Neuropathology
Director, South West Dementia
Brain Bank
Director, Institute of Clinical
Neurosciences
University of Bristol
Frenchay Hospital
Bristol, United Kingdom

**“Alzheimer’s Disease: Out of Sight,
Out of Mind”**

Wednesday, September 23, 2009

Administrative Office Coverage

December 25 and January 1—Office closed

*December 24 and December 26-31 office open with
minimal staffing.*

The University will be closed on Monday,

January 18, 2010 in observance of Martin Luther King Day.

Minimal staff on Friday, March 12, 2010 in observance of Spring break.

MEDICAL STUDENT, RESIDENCY AND FELLOWSHIP PROGRAM UPDATE

Medical Students

Pathology Medical Student Interest Group (PMSIG)

This group is its 4th year with David Wheeler as its current president. The group meets bi-monthly and arranges laboratory tours and works with faculty to organize mini-electives. About 18 MS-1 students attend its first information luncheon to get information on pathology as a career.

Recently the group was the recipient of one of 9 Medical student interest Group Matching Grants of \$1,000 awarded by the Intersociety Council for Pathology Information (ICPI). The funds will be used to support the local PMSIG activities.

Pathology Post-Sophomore Fellowship

Presently recruiting for this one year fellowship for July 2010.

Cell Biology Pathobiology Course

Consists of 20 faculty members, 12 residents and 10 fellows were laboratory instructors for the integrated course that included cell injury/adaptation, hem, neoplasia and inflammation/repair. Faculty course leaders were Larry Nichols, Sara Monaco, Geoff Murdoch and Scott Owens.

Residency Program

- A senior leadership group of Division Directors is meeting three or four times per year to discuss program-wide aspects of the residency program.
- Four of ten recruitment days have been completed for the Class of 2010.
- Faculty interested in serving as mentors for residents should contact Mona Melhem.
- Dr Macpherson is attending division faculty meetings to get feedback on the residency program.
- Opportunities to enhance on-line education platforms are being explored with the School of Medicine Laboratory for Education Technology.
- A collaboration with the School of Dental Medicine has been initiated to include dental residents doing elective time in select rotations.
- A Junior Laboratory Director four-week required rotation will be implemented as of July 1, 2010. The Molecular Anatomical Pathology rotation will expand from 2 to 4 weeks as of July 2010 and will be aligned with the fellowship elective rotations.

Fellowship Program.

- An Alumni luncheon will be held on Sunday March 21st at the USCAP meeting in Washington DC for all past and present fellows. More information will follow.
- The education-time-off for fellows has been expanded from 5 to up to 10 days per academic year. Fellowship Directors approve this time-off. There is no increase in BDT funds.
- A new national requirement is that no candidates for fellowships are to be contacted before the Program Office has confirmed through the NRMP that the candidate has no match violations. We do this before applications are forwarded to the Fellowship Directors.
- All fellows are now required to complete a Patient Safety Quality Improvement project as approved and monitored by individual fellowship directors.
- The Dermatopathology Fellowship recently received the maximum ACGME accreditation of 5 years.
- Sara Monaco has been appointed Associate Director for the Cytopathology Fellowship.
-

Trevor Macpherson, M.D.
Director, Medical School Teaching

SUMMER UNDERGRADUATE RESEARCH PROGRAM (SURP) UPDATE

Once again the Pathology arm of the **Summer Undergraduate Research Program (SURP)** is starting to recruit faculty willing to host college undergraduates in their laboratories for a 10-week scientific research experience this coming summer. SURP is a highly competitive outreach program, specifically designed to recruit high quality students into applying for graduate degrees through the University of Pittsburgh School of Medicine (UPSOM) programs such as the Interdisciplinary Biomedical Graduate Program and the Medical School. As the reputation of our program has grown, we have begun to attract high quality students from Universities such as Cornell and MIT, with the average GPA approximately 3.8.

The specifics of the program are as follows:

- The cost to the individual investigator is \$3,500.00. In some cases, there may be supplemental funding from UPSOM. Please contact me at 412-648-9690 or wmars@pitt.edu if you are interested in learning more about these funding opportunities.
- The program will run from **May 24-July 30**. Students are expected to have a specific project that they work on full time. They are also expected to attend supplemental programming 1-2 hours a week. At the end of the experience they must write an abstract and do a 10-minute power point presentation of their work.
- Student housing and travel will generously be provided by UPSOM.

The success of this program relies on quality mentors well as quality students. Part of our past success has been due to participation of interested faculty such as you. In addition, we have implemented several techniques designed to attract the highest quality students to our program such as a shared online application process. I would venture that many of you who have participated as SURP mentors in the past can attest to the quality of the students that we are attracting.

If you have any questions or are willing to be a mentor this year, please contact me at 412-648-9690, or via e-mail at wmars@pitt.edu. The application process has already begun.

Thanks so much!



Wendy M. Mars, Ph.D.
Director, Pathology SURP and
CMP Graduate Program

Intuition will tell the thinking
mind where to look next.

Jonas Salk

CELLULAR AND MOLECULAR PATHOLOGY PROGRAM UPDATE

I am happy to report that our program is continuing to thrive. During the course of the past year, seven students graduated; however, this fall we added **13 new students** (11 from IBGP and 2 from MSTP), giving us a current total of 40 students and making us one of the largest of the six Interdisciplinary Program affiliates. Despite losing three faculty members through career changes to other institutions outside of the University, overall our faculty numbers have also continued to grow. This year we added five new faculty members to CMP: **Alex Chen, Anette Duensing, Ira Fox, Anna Lokshin and Yuri Nikiforov**, bringing our current total to 65!

Good things continue to happen with our outstanding CMP students. At the recent Biomedical Graduate Student Association (BGSA) symposium, **Gina Coudriet** (mentor, Jon Piganelli) was selected as one of the 6 student speakers from approximately 200 attendees, whereas, **Christi Kolarcik** (mentor, Bob Bowser) was voted the most well-rounded student. Christi also won for the best poster presentation in the CMP category (approximately 40 students). In addition to being chosen as a speaker for the symposium, Gina was also one of the poster session winners at the recent SOM-sponsored Science 2009. Furthermore, both Gina and Christi were selected to attend the NIH-sponsored national graduate student research festival in November.

Hold these dates! A meeting of the CMP faculty will be held **December 2, 2009**. At the meeting we will discuss changes to the current program that have been implemented since we met in 2008, and we will also vote on some proposed changes to our program. Also, the CMP program was recently selected by the SOM as one of two that will undergo an outside review next summer; details of that process will also be presented at the meeting. Another date to remember...our annual retreat will be **6/11/2010** with on campus speakers and an evening poster session at the University Club.

Remember...if you are interested in having issues brought before the CMP steering committee, especially if you want them discussed at the upcoming meeting, please share them with either our CMP administrator, Shari Tipton (tiptonsl@upmc.edu), or with me (wmars@pitt.edu). Also, if you are aware of any outstanding faculty members who are not currently members of CMP but who would be eligible and have a possible interest in joining our program, let us know.

Thanks so much!

Wendy M. Mars, Ph.D.
Director
Pathology SURP and CMP Graduate Program

*Reason and free inquiry are the only
effectual agents against error.*

Thomas Jefferson

DIVISION OF HEMATOPATHOLOGY HIGHLIGHTS

Steven H. Swerdlow, M.D.

Served on the organizing panel for the Society for Hematopathology and European Association for Hematopathology 2009 Workshop on The Spectrum of Immunoproliferative Disorders and the Border Between B-Cell Lymphoma and Plasma Cell Neoplasms, Cleveland Clinic, September 24-26, 2009, Cleveland, OH, moderated the session on “lymphoplasmacytic lymphoma” and gave a case presentation.

Invited participant in the Athens Splenic Marginal Zone Lymphoma meeting and discussed unclassifiable splenic small B-cell lymphomas with trisomy 12 in the Workshop on integrative analysis of spleen immunopathology and genetics in SMZL, Athens, Greece, October 9-10, 2009.

Lydia Contis, M.D.

Active member of the Hematology and Clinical Microscopy Resource Committee of the College of American Pathologists and has been instrumental in creating new surveys for laboratory proficiency testing. A Bone Marrow Differential Survey will be released in 2010 utilizing cases from the Division of Hematopathology.

Fiona Craig, M.D.

Presented a workshop on Plasma Cell Neoplasms and chaired the Hematopathology Plenary session at the annual Clinical Cytometry Society (CCS) meeting in Jacksonville Florida. Continues to be an active member of the CCS Council and was recently appointed Chair of the Education Committee.

With Dr. Albert Donnenberg hosted the Six Topics in Practical Flow Cytometry seminar series and are putting together the proceedings, along with protocols and commentaries, for a publication in CRC Press.

Welcomed Ms. Siew-Fong Tan, a technologist from the National University Hospital, Singapore, as an observer during October and November, 2009 to the Clinical Flow Cytometry Laboratory .

Along with Albert Donnenberg, will be hosting the 21st Clinical Flow Cytometry Course in Pittsburgh, September 20 – 23, 2010.

Raymond Felgar, M.D.

Is a Member of American Mensa, Mensa International and recently became a member of the UPMC-Shadyside Cancer Committee.

Panelist Member: “Controversies in Hematopathology: Discussion on 2008 WHO Diagnostic Criteria for Multiple Myeloma.” 21st Regional Hematopathology Conference. Vanderbilt University. Nashville, TN (June 27, 2009).

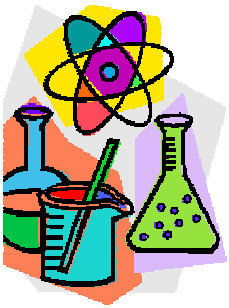
Presentation: Pediatric lymphocyte predominant Hodgkin lymphoma: Case presentation with review of newer diagnostic methods and clinical treatment. 21st Regional Hematopathology Conference. Vanderbilt University. Nashville, TN (June 27, 2009).

HIGHLIGHTS

Sara A. Monaghan, M.D.

Dr. Monaghan presented “Case Study Interpretation: Flow cytometry of hypogranular variant of acute promyelocytic leukemia” at the 2009 Clinical Cytometry Meeting and Course, Jacksonville, Florida, October 18, 2009.

She continues to serve on ASCP committee for Hematopathology as well as on the ASCP Resident Inservice Examination (RISE) and Fellowship Inservice Hematopathology Examination (FISHE) committees.



Robert Bowser, Ph.D. Is the PI for an R01 grant from NIH/NINDS for \$225,000 (6/1/09-5/31/14) entitled “Peptide and protein biomarkers amyotrophic lateral sclerosis.

A RC1 challenge grant from the stimulus was also funded for **Dr. Bowser** as the PI for \$493,997 (9/30/09-8/31/11) entitled: Multicenter validation of biomarkers for motor neuron disease.

Eric LaGasse, Ph.D.

2009 NIH Director's Transformative R01 Award: \$2.9 million/5 years grant, Organogenesis of Ectopic Tissue in Lymph Node.”

Parmjeet Randhawa, M.D.

Member, Transplantation Committee, Renal Pathology Society, 2009

Member, Quality Assurance, Polyomavirus Nephropathy, and Isolate v-Lesion Working Groups established at the Banff Conference of Allograft Pathology, August 2009.

Galina V. Shurin, PhD and Michael R. Shurin, MD, PhD. (Co-Directors) New invited teaching course (lectures and practical classes): “Dendritic cell immunology” October 19-24, 2009. Sao Paulo State University, Batucatu, Sao Paulo, Brazil.

Darrell Triulzi, M.D. was named Vice President for the AABB for 2009-2010.

Cary Wu, Ph.D.

Received an ARRA supplement award (09/01/2009 – 08/31/2011) from NIDDK, NIH.

Ramachandra Gullapalli, M.D., Ph.D.

Resident, PGY-3: research proposal for the CAP resident research foundation grant has been accepted and funded.



SPECIAL RECOGNITION

Alka Palekar, M.D.

Recommended by her peers, Dr. Palekar received a special recognition award from the Medical Staff of Shadyside Hospital for her dedication and service to quality medical care.

Congratulations!

The Mass Spectrometry Platform (MSP) laboratory of the UPCI Cancer Biomarkers Facility announces the availability of mass spectrometry imaging (MSI). The MSI method employs a Bruker ultraflexII MALDI-TOF mass spectrometer to perform hundreds to thousands of MS analyses at rastered positions across the surface of specially-treated tissue sections. Information extracted from the resulting mass spectra can be used to generate false color images of the tissue section, illustrating the location and relative abundance of distinct ion species, which can include molecules such as drugs and their metabolites, lipids, peptides and proteins. The method has been most notably championed by its principal developer, Dr. Richard M. Caprioli of Vanderbilt University. However, the method and its applications are evolving at an accelerating rate. The MSP laboratory continues to develop methods of tissue treatment, MALDI matrix application, and mass spectrometry conditions to increase the diversity of information which can be generated directly from tissue specimens using MSI, and to expand the types of tissue which are amenable to this analysis. Researchers are welcome to propose collaborative, developmental projects. The MSP laboratory can provide facilities and expertise for all phases of sample preparation, including cryosectioning; matrix application and mass spectrometry; histological staining of serial sections; and data analysis, including spectral preprocessing, image generation, and statistical classification.

David E. Malehorn PhD. SOM Pathology Department Ph. (412) 641-2455, malehornde@upmc.edu UPCI Cancer Biomarkers Facility, William L. Bigbee PhD and Thomas P. Conrads PhD, Co-Directors Mass Spectrometry Platform Laboratory, MWRI 4th Floor, 204 Craft Ave., Pittsburgh PA 15213

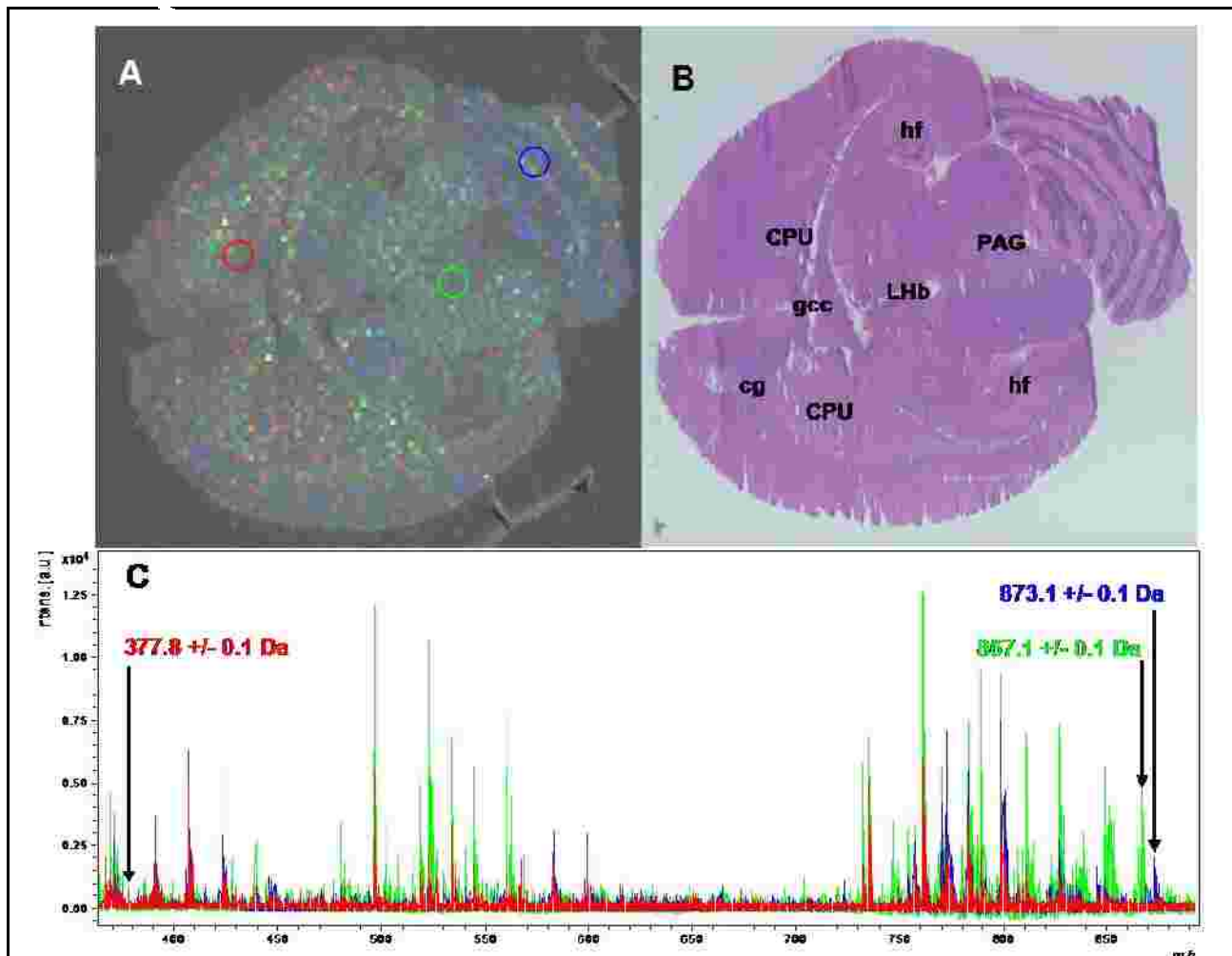


FIGURE: MSI results on a horizontal 20u cryosection of fresh-frozen rat brain, desiccated unfixed onto ITO glass slide, coated with 60 mg/ml DHB matrix in 67% MeOH/0.2% TFA, then lased at 200 micron spacing in reflectron positive mode, 200-2000 Da. **Panel A**, distribution and **relative** abundance of three molecular ions: 377.8 Da (red); 867.1 Da (green); and 873.1 Da (blue). Circles indicate location of spectra shown in Panel C. **Panel B**, H & E stain on serial 20u section. Bar = 1 mm. CPU-caudate putamen; Hf-hippocamal fissure; PAG-periaqueductal gray; cg-cingulum; gcc-genu of corpus callosum; Lhb-lateral habenular nu **Panel C**: representative mass spectra from three regions (circled in Panel A) overlaid. Arrows indicate the peaks for the molecular ions imaged in Panel A

PRESENTATIONS

Rohit Bhargava, M.D.

- Genomic Profiling of Breast Carcinoma: Morpho-Molecular Correlates. Breast Symposium: Current Practices and Evolving Issues-Part A. ASCP Annual Meeting, October 30, 2009.
- Benign Core Biopsies requiring Surgical Excisions. Breast Symposium: Current Practices and Evolving Issues-Part B. ASCP Annual Meeting, October 30, 2009.
- The Immunohistochemistry-Molecular Interface: Diagnostic, Theranostic and Genomic Applications in Breast Pathology. ASCP 2009 Annual Meeting, October 29, 2009.
- Stump the Stars: ASCP 2009 Annual Meeting, October 30, 2009. American Society of Clinical Pathology (ASCP) teleconference on "Breast Biopsy Interpretation". Program # 2217. June 19, 2009.
- Veteran Affairs Genomic Medicine Advisory Committee Meeting in Washington, D.C, April 27, 2009. Invited Speaker presented on Breast Cancer Genomics.

Robert Bowser, Ph.D.

- West Virginia University, Department of Biochemistry. "Protein biomarkers for neurodegenerative diseases: Insights into disease mechanisms and diagnostic utility". Morgantown, WV. September 8, 2009.
- Platform presentation at the 8th Annual Northeast ALS Consortium (NEALS) Meeting. Talk entitled "The Pathway of Biomarker Development: Challenges and Opportunities". Tampa, FL. October 29, 2009.
- Platform presentation at the 20th Annual International Symposium on ALS/MND. Talk entitled "Validation of protein biomarkers for ALS". Berlin, Germany. December 7, 2009.

David Dabbs, M.D.

- Presented at the British Division of the International Society of Pathology, Cardiff, Wales: "Update on Tumors of Unknown Origin." July 2, 2009.
- European Society of Pathology, Florence, Italy: Immunohistochemistry in the diagnosis of breast tumors. Sept 4-11, 2009.
- American Society of Clinical Pathologists Annual Meeting: Update of Breast Pathology, Current Practices and Evolving Issues; Microscopic Workshop on Core Biopsies of the breast; Immunohistochemistry-Molecular Interface: Diagnostic, Theranostic and Genomic Applications; New CAP-ASCO Guidelines for Hormone Receptor testing; Stump the Stars in Surgical Pathology. Oct 27-Nov 1, 2009.

Annette Duensing, M.D.

- Korzeniewski N, Zheng L, Duensing A, Duensing S. HPV-16 E7, proteolysis and centriole duplication. 2009 DNA Tumour Virus Meeting, July 14-19, 2009, Oxford, UK. *Oral Presentation.*
- Spardy N, Hoskins EE, Wells SI, Duensing A, Duensing S. HPV-16 E7 attenuates DNA damage checkpoint control by accelerating claspain proteolysis. 2009 DNA Tumour Virus Meeting, July 14-19, 2009, Oxford, UK. *Oral Presentation.*
- Spardy N, Duensing A, Duensing S. HPV-16 E7, genomic instability and the Fanconi Anemia pathway. 2009 DNA Tumour Virus Meeting, July 14-19, 2009, Oxford, UK. *Oral Presentation.*
- Parry JA, Brown MF, Seneviratne D, Duensing S, Duensing A. Imatinib mesylate modulates regulators of tumor cell quiescence in gastrointestinal stromal tumor cells. Connective Tissue Oncology Society (CTOS), 15th Annual Meeting, November 5-7, 2009, Miami, FL. *Oral Presentation.*
- Bauer S, Parry JA, Mühlenberg T, Chatterjee P, Kuan SF, Fletcher JA, Duensing S, Duensing A. Pro-apoptotic activity of bortezomib in gastrointestinal stromal tumor (GIST) cells. Connective Tissue Oncology Society (CTOS), 15th Annual Meeting, November 5-7, 2009, Miami, FL. *Oral Presentation.*

Csaba Galambos, M.D.

- Pulmonary vascular development----New model - same passion” Immunogenetics - Surgery Combined Research Seminar Series. Children’s Hospital of Pittsburgh of UPMC, Pittsburgh, PA October 28.
- Presented at the Interim Meeting of Society for Pediatric Pathology, Philadelphia, PA, 2009.
- Castro, EC; Parks WT, Galambos, C. The Role of Pericytes In Pulmonary Microvessel Development And In Neonatal Lung Disorders
- Castro, EC; Parks WT, Galambos, C. Human pulmonary lymphatic vessel development and its alteration in neonatal lung disorders.
- Castro, EC; Parks WT, Galambos, C. The Ontogeny of Angiotensin-Converting Enzyme (ACE) And Its Aberrant Expression May Contribute to The Pathology of Bronchopulmonary Dysplasia (BPD)
- Castro, EC; Parks, WT, Galambos, C. Remodeling defect leads to a novel malformation variant of the cardinal venous system. Gheorghe, G.; Galambos, C; Jain, S; Krishnamurti, L; Jaffe, R. A novel TCIRG1 gene mutation leads to severe form osteopetrosis with altered content of monocytes/macrophages in several organs.

Eric Lagasse, Ph.D.

- Invited speaker. Rescue of Lethal Hepatic Failure by Functional Ectopic Liver. Marion Bessin Liver Research Center. Albert Einstein College of Medicine. Bronx. New York. March 4th, 2009
- Invited Speaker. Stem Cell Niche Interactions. Keystone Symposia. Fairmont Chateau Whistler, Whistler, British Columbia. April 21 - April 26, 2009.
- Invited speaker. Cell Based Therapy and Tissue Engineering for Liver Disease. Orthopaedic research seminar series. University of Pittsburgh. April 28, 2009.
- Speaker. Cancer Stem Cells, Myth or Reality? McGowan Institute Annual Meeting. Pittsburgh. June 18th, 2009.
- Speaker. Cancer Stem Cells: Research in Progress in Stem Cell Biology. Pittsburgh. October 2, 2009.

George K. Michalopoulos, M.D., Ph.D.

- “Personalized Medicine: Institutional Initiatives and Pathology Involvement, North East Association of Pathology Chairs, Cambridge Beaches, Bermuda, October 1-4, 2009.
- “Liver Regeneration,” Albert Einstein College of Medicine, Bronx, NY, October 21, 2009.

**Parmjeet Randhawa, M.D.**

- Presented on “Focal Deposits of Complement Degradation Product C4d in Renal Allografts,” at the 10th Banff Conference on Allograft Pathology, Banff, Canada, August, 10, 2009.
- Presented at the American Society of Transplantation Infectious Disease Guidelines on Monitoring BKV infection

Miguel Reyes-Mugica, M.D.

- Presented “Cancer Predisposition Syndromes in Children: Lesions Seemingly Trivial With Potential Significance.” 22nd European Congress of Pathology, Florence, Italy, 4-9 September, 2009.
- “Nasopharyngeal Angiofibroma And The Erectile Tissue Of The Nose” and Director, Head and neck Pathology. XIV Congress of the Latin-American Society of Pediatric Pathology (SLAPPE), Guatemala, Antigua, October 31- November 1st, 2009.

Michael Shurin, M.D., Ph.D.

- “Dendritic cells in cancer”, Regulatory myeloid Suppressor Cells in Health and Disease. Clearwater Beach, FL. March 2009.
- “Evaluation of dendritic cells in cancer clinical trials”, 3rd Annual Conference on Immunodiagnosics and Immunomonitoring, Chicago, IL. April 2009.
- “Combination of nontoxic chemomodulation with dendritic cell vaccines for cancer therapy”. First Intl. Conference “Cancer Immunotherapy and Immunomonitoring”. Kiev, Ukraine. May 2009.
- “Chemo-immunotherapy and the tumor microenvironment”. Juo General Hospital. Juo, SP, Brazil. October 2009.

Cary Wu, Ph.D.

- “The Molecular Basis of Cell-Matrix Adhesion and Signaling” in Spotlight Session 6 “Matrix-Induced Control of Growth and Differentiation”, Science 2009, University of Pittsburgh, Pittsburgh, PA..

GRADUATE STUDENT'S HIGHLIGHTS

Gina M. Coudriet, Student, Cellular and Molecular Pathology Program.

Pre-doctoral Fellowship

Research Advisory Council (RAC) of Children's Hospital of Pittsburgh of UPMC's pre-doctoral fellowship. Research Area: *Hepatocyte Growth Factor Regulates Inflammation and the Acute Phase Response in Obesity*.

Oral Presentation

- Beyond thrombosis: The role of plasminogen activator inhibitor type-1 (PAI-1) in obesity-induced inflammation. [Coudriet GM](#), Mars WM, Piganelli JP. 20th Annual Department of Pathology Research Day. Pittsburgh, PA. 2009.
- Beyond Thrombosis: The role of Plasminogen activator inhibitor type-1 (PAI-1) in obesity-induced inflammation. [Coudriet GM](#), Mars WM, Piganelli JD. NIDDK Mid-Atlantic Diabetes Research Symposium. Bethesda, MD. 2009.
- Beyond Thrombosis: The role of Plasminogen activator inhibitor type-1 (PAI-1) in obesity-induced inflammation. [Coudriet GM](#), Mars WM, Piganelli JD. 2009 Annual BGSA Research Symposium. Pittsburgh, PA. 2009
- Poster Presentation and Student Poster Award Winner
Beyond Thrombosis: The role of Plasminogen activator inhibitor type-1 (PAI-1) in obesity-induced inflammation. [Coudriet GM](#), Mars WM, Piganelli JD. Science 2009 Unplugged. Pittsburgh, PA. 2009.

Publication

Su D, [Coudriet GM](#), Kim DH, Lu Y, Perdomo G, Qu S, Slusher S, Tse HM, Piganelli JD, Giannoukakis N, Zhang J, Dong HH. FoxO1 Links Insulin Resistance to Proinflammatory Cytokine IL-1beta Production in Macrophages. *Diabetes* 2009 Nov 58(11) 2624-33.

FELLOW'S HIGHLIGHTS

Anand Padmanabhan MD PhD, Fellow, Transfusion Medicine and Apheresis Invited Talk: ABO-incompatible renal transplantation: Past, Present and Future. Anand Padmanabhan, and Yossi Schwartz, New York Blood Center, NY.

Comparative outcome analysis of ABO-incompatible and positive crossmatch renal transplantation: A single-Center Experience. Padmanabhan A, Ratner LE, Jhang JS, Duong JK, Markowitz GS, Vasilescu ER, Crew RJ, Schwartz J. *Transplantation*. 2009 Jun 27;87(12):1889-96.

Use of the haematopoietic progenitor cell parameter in optimizing timing of peripheral blood stem cell harvest. Padmanabhan A, Reich-Slotky R, Jhang JS, Dael S, Crowder T, Colovai AI, Schwartz J. *Vox Sang* 2009 Aug;97(2): 153-9.

Ibrahim Batal , M.D., Fellow, Transplant Pathology

Batal I, Domsic R, Medsger T, Kiss L P, Randhawa P, and Bastacky S . Prognostic Pathological Features in Renal Biopsies in Scleroderma Renal Crisis. *Human Path* 2009 Mar;40(3):332-40.

Gupta G, Shapiro R, Girnita A, Batal I, McCauley J, Basu A, Tan H, Randhawa P. [Neutrophilic](#) tubulitis as a marker for urinary tract infection in renal allograft biopsies with c4d deposition. *Transplantation*. 2009 Apr 15;87(7):1013-8.

Batal I, Franco ZM, Shapiro R, Basu A, Tan H, Kayler L, Zeevi A, Morgan C, and Randhawa P. Clinicopathologic Analysis of Patients With BK Viruria and Rejection-Like Graft Dysfunction Treated With Increased Immunosuppression. *Hum Pathol*. 2009 Sep;40(9):1312-9.

Batal I, Chalasani, Wu C, Shapiro R, Bastacky S, and Randhawa P. Deposition of Complement Product C4d in Anti-Glomerular Basement Membrane Glomerulonephritis. *Am J Kidney Dis*. 2009 Jun;53(6):1098-101.

Batal I, Zainah H, Basu A, Tan H, Shapiro R, and Randhawa P. The Significance of Renal C4d Deposits in Patients with BK Viruria, Viremia, and Nephropathy. *Mod Pathol*. 2009 Nov;22(11):1468-76.

**PATHOLOGY
RESEARCH SEMINAR
SERIES**

Title: TBA

Herbert W. Virgin IV, M.D., Ph.D.

Edward Mallinckrodt Professor of
Pathology

Washington University
St. Louis, MO

Wednesday, January 13, 2010

Noon

1104 Scaife Hall

**“Beyond Thrombosis: The Role of
Plasminogen Activator Inhibitor
Type-1 (PAI-1) in Obesity-Induced
Inflammation”**

Gina Coudriet

Graduate Student, Cellular and Mo-
lecular Pathology Program
and

**“Retinoid Signaling in Amyotro-
phic Lateral Sclerosis (ALS):
Hero or Villian”**

Christi Kolarcik

Graduate Student, Cellular and Mo-
lecular Pathology Program

Wednesday, January 20, 2010

noon

1105AB Scaife Hall

Title: TBA

Iovona Vasile Pandrea, M.D., Ph.D.

Visiting Associate Professor
of Pathology

Center for Vaccine Research
University of Pittsburgh

Wednesday, January 27, 2010

noon

1105AB Conference Center

PUBLICATIONS

Sargent, R.L., Craig, F.E., Swerdlow, S.H. Comparison of bcl-2, CD38 and ZAP-70 Expression in Chronic Lymphocytic Leukemia, *Int J Clin Exp Pathol*, 2009, 2(6):574-82.

Gradowski, J.F., Jaffe, E.S., Warnke, R., Pittaluga, S., Surti, U., Gole, L., Swerdlow, S.H. Follicular Lymphomas with Plasmacytic Differentiation Include Two Subtypes, *Modern Pathology*, (in press).

Edinger, J.T., Clark, B.Z., Pucevich, B.E., Geskin, L.J., Swerdlow, S.H. CD30 expression and proliferative fraction in non-transformed mycosis fungoides, *Am J Surg Pathol*, (in press).

Dufresne, S.D., Felgar, R.E., Sargent, R.L., Surti, U., Gollin, S.M., McPhail, E.D., Cook, J.R., Swerdlow, S.H. Defining the Borders of Splenic Marginal Zone Lymphoma: A Multiparameter Study, *Human Pathology*, (in press).

Swerdlow, S.H., Pathology, In: Dharnidharka, V., Green, M., Webber, S. (Eds.): *Post-Transplant Lymphoproliferative Disease (PTLD)*, Springer Publishing, (In press). (book chapter)

Cousar, J.B., Macon, W.R., McCurley, T.L., Swerdlow, S.H. Lymph Nodes. In Mills, S.E., Carter, D., Greenson, J., Reuter, V., Stoler, M., (Eds.): *Lymph Nodes, Sternberg’s Diagnostic Surgical Pathology*, 5th Edition, Wolter Kluwer/Lippincott Williams & Wilkins, 2010, pp. 681-744. (book chapter).

Lisheng G, D Baskic, P Basse, L Vujanovic, S Unlu, T Yoneyama, A Sobo, J Han, D Bankovic, MJ. Szczepanski, JL Hunt, RB. Herberman, SM Gollin, RL Ferris, TL Whiteside, EN. Myers, and NL Vujanovic. Sheddase activity of tumor necrosis factor- α converting enzyme is increased and prognostically valuable in head and neck cancer. *Cancer. Epidemiol. Biomarkers Prev.* 2009, 18, 2913-2922. PMID: 19843672-in process.

Dufresne SD, Felgar RE, Sargent RL, Surti U, Gollin SM, McPhail ED, Cook JR, Swerdlow SH. Defining the borders of splenic marginal zone lymphoma: a multiparameter study. *Human Pathology*, in press.

Castro ECC, Blasquez C, Boyd J, Correa H, de Chadarevian J-P, Felgar RE, Graf N, Levy N, Lowe EJ, Manning JT, Proytcheva MA, Senger C, Shayan K, Sterba J, Werner A, Surti U, Jaffe R. Clinicopathologic features of histiocytic lesions following acute lymphoblastic leukemia (ALL), with a review of the literature. *Pediatric and Developmental Pathology*, in press.

**PATHOLOGY
RESEARCH SEMINAR
SERIES**

Title: "TBA"

Michael Becich, M.D., Ph.D.

Professor and Chair

Department of Biomedical

Informatics

University of Pittsburgh

Wednesday, February 3, 2010

noon

1104 Conference Center

Scaife Hall

Title: "TBA"

Jon S. Morrow, M.D., Ph.D.

Raymond Yesner Professor of

Pathology and Chair

Department of Pathology

Yale University

Wednesday, February 10, 2010

noon

1105AB Conference Center

Scaife Hall

Title: "TBA"

Frances M. Sladek, Ph.D.

Professor of Cell Biology and

Toxicologist

Department of Cell Biology and

Neuroscience

University of California

Riverside, CA

Wednesday, February 24, 2010

noon

1105 AB Conference Center

Scaife Hall

Monaco SE, Teot LA, Felgar RE, Surti U, Cai, G. Fluorescence in-situ hybridization (FISH) studies on direct smears: an approach to enhance the fine needle aspiration biopsy diagnosis of B-cell non-Hodgkin lymphomas, *Cancer Cytopathology*, 117:338-348, 2009.

Felgar RE. Myelodysplasia with isolated thrombocytopenia (Refractory Thrombocytopenia). *ASCP Check Sample Program: Clinical Hematology Series 44:77-86*, 2009.

Plowey ED, Felgar RE. Clonally-related Histiocytic Neoplasm in Patients with Prior Acute Lymphoblastic Leukemia. *ASCP Check Sample Program: Clinical Hematology Series 44:87-98*, 2009.

Rollins-Raval M and Felgar RE. Case of the Month: Anatomic Pathology Section, Department of Pathology, University of Pittsburgh: Case 605: A 76 year-old woman with a left thigh mass. May 2009 web case. (<http://path.upmc.edu/cases/case605.html>)

Amin M and Felgar RE. Case of the Month: Clinical Pathology Section, Department of Pathology, University of Pittsburgh: Case 614: a 61 year-old female with abdominal pain and leukocytosis. July 2009 web case. (<http://path.upmc.edu/cases/case614.html>).

Hood BL, Malehorn DE, Conrads TP, Bigbee WL. (2009) Chapter 8: Serum Proteomics Using Mass Spectrometry (Michael A. Tainsky ed), *Methods of Molecular Biology, Tumor Biomarker Discovery*, Vol. 520, pp 107-128, Humana Press.

Bell AW, Deutsch EW, Au CE, Kearney RE, Beavis R, Sechi S, Nilsson T, Bergeron JJ; HUPO Test Sample Working Group. (2009) A HUPO test sample study reveals common problems in mass spectrometry-based proteomics. *Nature Methods* 6: 423-430.

Manohar R. and Lagasse E. Transdetermination: a new trend in cellular reprogramming. *Molecular Therapy*. (2009). 17 (6): 936-938.

Jing Z, Caltagarone J., and Bowser, R. (2009). Altered subcellular distribution of c-Abl in Alzheimer's disease. *J Alz Dis*, 17(2): 409-422.

Henkel JS, Beers DR, Wen S, Bowser R, and Appel SH. (2009). Decreased mRNA expression of tight junction proteins in lumbar spinal cords of ALS patients. *Neurology*, 72(18): 1614-1616.

Lustgarten JL, Visweswaran S, Hogan WR, Bowser R, and Gopalakrishnan V. (2009). Knowledge-based variable selection for rule learning on proteomic data. *BMC Bioinformatics*, <http://www.biomedcentral.com/1471-2105/10/S9/S16>.

**PATHOLOGY
RESEARCH SEMINAR
SERIES**

"MicroRNA in Liver Development and
Cholestatic Disease"

Joshua R. Friedman, M.D., Ph.D.

Assistant Professor of Pathology
Department of Pathology
University of Pennsylvania
Philadelphia, PA

Wednesday, March 3, 2010

noon

1104 Conference Center
Scaife Hall

Title: "TBA"

Holger Willenbring, M.D., Ph.D.

Assistant Professor of Surgery
Institute for Regeneration Medicine and
Department of Surgery
University of California
San Francisco, CA

Wednesday, March 10 2010

noon

1104 Conference Center
Scaife Hall

Title: "TBA"

John P.A. Ioannidis, M.D.

Professor and Chairman
Department of Hygiene and
Epidemiology
University of Ioannina
School of Medicine
Ioannina, Greece

Wednesday, April 7, 2010

noon

1104 Conference Center
Scaife Hall

Bowser R, and Lacomis D. (2009). Applying proteomics to the diagnosis and treatment of ALS and related diseases. *Muscle & Nerve*, 40(5): 753-762.

A Quantitative Reverse Transcription-PCR Assay for Rapid Automated Analyses of Breast Cancer Sentinel Lymph Nodes. Hughes SJ, Xi, L, Gooding WE, Cole DJ, Mitas M, Metcalf J, Bhargava R, Dabbs D, Ching J, Kozma L, McMillan W, Godfrey TE. *J Mol. Diagn.* 2009;11:576-582.

Breast Cancer Molecular Class ERBB2: Preponderance Of Tumors With Apocrine Differentiation And Expression Of Basal Phenotype Markers CK5, CK5/6 And EGFR. Rohit Bhargava, Sushil Beriwal, Joan Striebel, David J Dabbs. *Appl Immunohistochem Mol Morphol.* 2009. Epub ahead of print. PMID: 19801938.

Thyroid transcription factor-1 and "basal-marker" expressing small cell carcinoma of the breast. Cagatay Ersahin, Sudeshna Bandyopadhyay, and Rohit Bhargava. *Int J Surg Pathol.* 2009;17:368-372.

Intraductal location of the sclerosing adenosis of the breast. Bulent Unal, A Serhat Gur, Rohit Bhargava, Howard Edington, Gretchen Ahrendt, Atilla Soran. *Bratisl Lek Listy.* 2009;11(4):251-252.

Prevalence, Morphologic Features and Proliferation Indices of Breast Carcinoma Molecular Classes Using Immunohistochemical Surrogate Markers. Rohit Bhargava, Joan Striebel, Sushil Beriwal, John C. Flickinger, Agnieszka Onisko, Gretchen Ahrendt and David J. Dabbs. *Int J Clin Exp Pathol* 2009;2(5):444-455.

Are encapsulated papillary carcinomas of the breast in-situ or invasive? A basement membrane study of 27 cases. Nicole N Esposito, David J Dabbs, Rohit Bhargava. *Am J Clin Pathol.* 2009;131:228-242.

Chivukula M, O'Connor S, Dabb DJ, Bhargava R. PAX 2: a novel müllerian marker for serous papillary carcinomas to differentiate from micropapillary breast carcinoma. *International Journal of Gynecologic Pathology, Int J Gynecol Pathol.* 2009 Nov;28(6):570-8.

Recavarren RA, Chivukula M, Carter G, Dabbs DJ: Columnar Cell lesions and Pseudoangiomatous hyperplasia like stroma: Is there an epithelial-stromal interaction? *Int J Clin Exp Pathol* 2009; 3(1):87-97.

**PATHOLOGY
RESEARCH SEMINAR
SERIES**

Title: "TBA"

John P.A. Ioannidis, M.D.

Professor and Chairman
Department of Hygiene and
Epidemiology
University of Ioannina
School of Medicine
Ioannina, Greece

Wednesday, April 7, 2010

noon

1104 Conference Center
Scaife Hall

Title: "TBA"

Renato V. Iozzo, M.D., Ph.D.

Professor of Pathology, Anatomy and
Cell Biology
Department of Pathology, Anatomy
and Cell Biology
Thomas Jefferson University
Philadelphia, PA

Wednesday, April 14, 2010

noon

1105 AB Conference Center
Scaife Hall

Title: "TBA"

Anning Lin, Ph.D.

Professor
Institute for Regeneration Medicine and
Department of Surgery
University of California
San Francisco, CA

Wednesday, April 21, 2010

noon

1104 Conference Center
Scaife Hall

Bohn OL, Nasir I, Brufsky A, Tseng GC, Bhargava R, McManus K, Chivukula M: Biomarker profile in breast carcinomas presenting with bone metastasis. *Int J Clin & Exp Path*, accepted, in Press.

Gao F, Carter G, Tseng G, Chivukula M. Clinical importance of histologic grading of lobular Carcinoma in Situ (LCIS) on breast core needle biopsies. Current issues and controversies. Accepted, *American Journal of Clinical Pathology*, October, 2009, In Press

In vitro neural differentiation of human embryonic stem cells using a low-density mouse embryonic fibroblast feeder protocol.

Ozolek JA, Jane EP, Esplen JE, Petrosko P, Wehn AK, Erb TM, Mucko SE, Cote LC, Sammak PJ. *Methods Mol Biol*. 2010;584:71-95.

Selective pathologies of the head and neck in children: a developmental perspective. Ozolek JA. *Adv Anat Pathol*. 2009 Sep;16(5):332-58.

Tourkova I.L., Shurin G.V., Ferrone S., Shurin M.R. Interferon Regulatory Factor 8 Mediates Tumor-induced Inhibition of Antigen Processing and Presentation by Dendritic Cells. *Cancer Immunol Immunother.*, 58:567-574, 2009.

Shurin G.V., Tourkova I.L., Kaneno R., Shurin M.R. Chemotherapeutic agents in noncytotoxic concentrations increase antigen presentation by dendritic cells via an IL-12-dependent mechanism. *J. Immunology*, 183:137-144, 2009.

Shurin M.R., Potapovich A., Tyurina Y.Y., Tourkova I.L., Shurin G.V., Kagan V.E. Recognition of live phosphatidylserine-labeled tumor cells by dendritic cells: a novel approach to immunotherapy of skin cancer. *Cancer Research* 69(6): 2487-2496, 2009.

Kaneno R., Shurin G.V., Tourkova I.L., Shurin M.R. Chemomodulation of human dendritic cell function by antineoplastic agents in low noncytotoxic concentrations. *J. Translat. Medicine*, 7:58, 2009.

Book: "*Dendritic Cells in Cancer*", M.R.Shurin & R.Salter (Eds). Springer Publ., N.Y., 2009.

Review: Duensing A, Spardy N, Chatterjee P, Zheng L, Parry J, Cuevas R, Korzeniewski N, Duensing S. Centrosome overduplication, chromosomal instability and human papillomavirus (HPV) oncoproteins. *Environ Mol Mutagen*. 2009; 50:741-747.

Petricca, G., Leppilampi, M., Jiang, G., Owen, G. R., Wiebe, C., Koivisto, L., Hakkinen, L., Wu, C. and Larjava, H. Localization and potential function of kindlin-1 in periodontal tissues. *Eur. J. Oral. Sci.* (2009) 117(5):518-27

Yue, W., Sun, Q., Landreneau, R., Wu, C., Yu, J. and Zhang, L. Fibulin-5 suppresses lung cancer invasion by inhibiting matrix metalloproteinase-7 expression. *Cancer Research* (2009) 69(15):6339-6346

Liang, X. Sun, Y.F., Yi, M. Q., Powell, H., Rearden, A., Wu, C., Evans, S. E. and Chen, J. Targeted ablation of PINCH1 and PINCH2 from murine myocardium results in dilated cardiomyopathy and early post-natal lethality. *Circulation* (2009) 120(7):568-576

Yuan, Y., Nymoan, D. A., Dong, H. P., Stavnes, H. T., Rossnes, A. K., Bjørang, O., Wu, C., Nesland, J. M., Davidson, B., Tenascin-X is a novel diagnostic marker of malignant mesothelioma. *Am. J. Surg. Pathol.* (2009) 33(11):1673-82

Zhao, J., Zhang, Y., Ithychanda, S. S., Tu, Y., Chen, K., Qin, J. and Wu, C. Migfilin interacts with Src and contributes to cell-matrix adhesion-mediated survival signaling. *J. Biol. Chem.* (2009) Oct 15. [Epub ahead of print]

Bansal M, Austin RM, Zhao C (corresponding author). High Risk HPV DNA detection in less than 2% of over 25,000 cytology negative imaged liquid based Pap test samples from women 30 and older. *Gynecol Oncol.* 2009 115(2):257-61, Epub 2009 Aug 7.

Wang Y, Liu X, Xing X, Cui Y, Zhao C, Luo B. Variations of Epstein-Barr virus nuclear antigen 1 gene in gastric carcinomas and nasopharyngeal carcinomas from Northern China. *Virus Research.* Accepted in November 2009

Armah H, Austin RM, Dabbs D, Zhao C (correspondence author). Follow-Up Findings in women with HPV-positive ASCUS Screening test results in a large women hospital. *Arch Pathol Lab Med.* 2009;133(9):1426-30

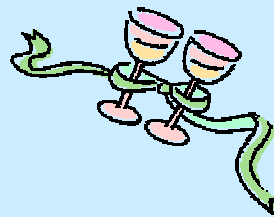
Zhao C, Florea A, Onisko A, Austin RM. Histologic follow-up results in 662 patients with Pap test findings of a typical glandular cells: results from a large academic womens hospital laboratory employing sensitive screening methods. *Gynecol Oncol.* 2009 Sep;114(3):383-9.

Korzeniewski N, Zheng L, Cuevas R, Parry J, Chatterjee P, Anderton B, Duensing A, Munger K, Duensing S. Cullin 1 Functions as a Centrosomal Suppressor of Centriole Multiplication by Regulating Polo-like Kinase 4 Protein Levels. *Cancer Res.* 2009, 69: 6668-6675.

Spardy N, Covella K, Cha E, Hoskins EE, Wells SI, Duensing A, Duensing S. The human papillomavirus type 16 E7 (HPV-16 E7) oncoprotein attenuates DNA damage checkpoint responses by increasing the proteolytic turnover of claspin. *Cancer Res.* 2009, 69: 7022-7029.

Bauer S, Parry JA, Mühlenberg T, Brown MF, Seneviratne D, Chatterjee P, Chin A, Rubin BP, Kuan SF, Fletcher JA, Duensing S, Duensing A. Pro-apoptotic activity of Bortezomib in gastrointestinal stromal tumor (GIST) cells. *Cancer Res.* (in press)

Dr. Ibrahim Batal, Fellow in Transplant Pathology, married Hanady Zainah Saturday October 31, 2009 St. Mary of the Mount Church in Pittsburgh.



Grace Wahl (Post-Award Assistant) married Tom Crawford September 21, 2009. They reside in Lawrence County.

Congratulations!



Dr. Esther Elishaev and husband Michael...welcomed their second child, Simone, born July 24, 2009 weighing in at 6 lbs. Simone has an older sister, Gabriella, 9 y/o.

Congratulations!

