



PATHOLOGY NEWS

Special Points of Interest

Administrative Update
Page 2

Faculty Highlights
Page 3

Hematopathology
Page 4-5

Summer Undergraduate
Research Program
Page 6

Cellular and Molecular
Pathology Program
Page 7

Highlights
Page 8

Presentations
Page 9

Seminars & Publications
Page 9-14

Fitness for Life
Page 15

Photographic Services
Page 16

Thanksgiving Harvest
Page 17

Dear Colleagues:

As you probably know by now I received the news from the experimental pathology society (ASIP) that I was selected to receive the Rous-Whipple Award in April 2009. This award is given to a scientist at the annual meeting, based on research in experimental pathology (<http://www.asip.org/awds/rous-w.htm>). I received the award for my research in liver regeneration. Since the most important part of my research took place at Pitt and UPMC, I am writing this note to thank you all for your strong support as it has enabled me to continue my career as a productive scientist. It would have been impossible for me to do this without the many productive faculty, staff and students in our Department.

I would like to take the opportunity to reflect on how much we have to be thankful for. I am grateful for the collective wisdom, hard work and enthusiasm our Department has for the work we all do. As we face the challenges of shrinking grant support, hospital budgets, facility renovations and laboratory moves, I know we will all do our best to overcome the obstacles we all share in getting our jobs done. I am looking forward to a bright and promising 2008 and I wish everyone a happy upcoming holiday season.

Sincerely yours,

George K. Michalopoulos, M.D., Ph.D.
Professor and Chairman
Department of Pathology



To enjoy the things we ought and to hate the things we ought has the greatest bearing on excellence of character.

Aristotle
384 BC to 322 BC



ADMINISTRATIVE OFFICE UPDATE

Pathology's Human Resources Department has created a website for the convenience of the faculty and staff. The link can be found on the Department of Pathology's home page under Quick Links as Pathology HR. The direct link for the website is <http://path.upmc.edu/Payroll/Index.htm> . Here are some of the helpful items that can be found on the new site:

- Frequently Requested Forms
- Visa Information
- Timesheets

Please forward any questions or suggestions to Nicole Paterline at paterlinena@upmc.edu or 412-684-1230.

Compliance Training Update

The deadline for completing all FY 08 compliance education requirements is April 30, 2008. The next live lectures are Monday, February 11, 2008 and Tuesday, April 8, 2008. To register contact Sharon Hennel, UPMC Ethics and Compliance Office, at hennels@upmc.edu or by calling 412-647-6284.

Email Disclaimer

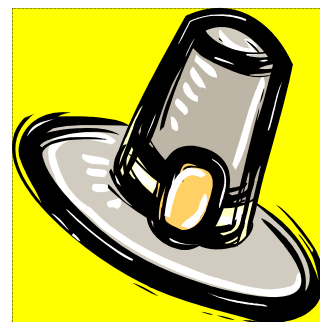
It has been recommended that a statement at the bottom of your emails should be included. The recommended statement follows: "This e-mail may contain confidential information of the sending organization. Any unauthorized or improper disclosure, copying, distribution, or use of the contents of this e-mail and attached document(s) is prohibited. The information contained in this e-mail and attached document(s) is intended only for the personal and confidential use of the recipient (s) named above. If you have received this communication in error, please notify the sender immediately by e-mail and delete the original e-mail and attached document(s).

Holiday Office Coverage

Please note the administrative offices will be open over the holiday breaks, November 23 (day after Thanksgiving) December 24 and December 26-31 with minimal staffing.

The University is closed November 22,
December 25 and January 1.

The University will be closed on Monday,
January 21, 2008 in observance of Martin Luther King Day.



Tomatoes and oregano make it Italian; wine and tarragon make it French. Sour cream makes it Russian; lemon and cinnamon make it Greek. Soy sauce makes it Chinese; garlic makes it good.

Alice May Brock



FACULTY HIGHLIGHTS

Robert Bower, Ph.D.

- Appointed to the University of Pittsburgh Technology Transfer Committee

Charleen T. Chu, M.D., Ph.D.

- is a chartered member of the Cell Death in Neurodegeneration (CDIN) Study Section of the National Institutes of Health for the term March 2007-June 2009.
- **Ruben Dagda, Jianhui Zhu, Scott Kulich and Charleen T. Chu** received Honorable Mention for the Weil Award for Best paper on Experimental Neuropathology, for their presentation entitled ERK2 translocates to mitochondria during neurodegeneration and is associated with mitochondrial autophagy at the 8th Annual meeting of the American Association of Neuropathologists in Washington, DC.

David Dabbs, M.D.

- The textbook *Diagnostic Immunohistochemistry*, has received a Commended Award for Basic and Clinical Sciences from the British Medical Association, Annual Book Awards.

John Ozolek, M.D.

- Member, Research Committee for the Society for Pediatric Pathology January, 2007-

Michael Shurin, M.D., Ph.D.

- **Shurin M.R.**, Shurin G.V., Chatta G.S. Aging and the Dendritic Cell System: Implications for Cancer. *Crit Rev Oncol Hematol.* 64(2): 90-105, 2007.
- Zhong H., **Shurin M.R.**, Han B. Optimizing dendritic cell-based immunotherapy for cancer. *Expert Review of Vaccine*, 6(3): 333-345, 2007.
- “*Immune-Mediated Diseases: From Theory to Therapy*”, M.R.Shurin & Y.S.Smolkin (Eds). 458 pages. Springer Publ., N.Y., 2007. Edited.
- Organizer, Second Intl. Meeting, “Immune mediated diseases: From Theory to Therapy,” Moscow, Russia, September, 2007.
- Organizer, Second Intl Meeting "Immunodiagnostics and Immunomonitoring", Washington, DC, December, 2007.

Xiao-Ming Yin, M.D., Ph.D.

- Invited to serve on the Editorial Board of Journal of Biological Chemistry
- Invited to serve on the Program Committee of American Society for Investigative Pathology
- Organized and chaired a major symposium on “Autophagy and Diseases” in 2007 ASIP annual meeting.
- Co-chaired a research session on “Basic Mechanism of Cell Death” in 2007 AASLD annual meeting.

DIVISION OF HEMATOPATHOLOGY UPDATE

Lydia Contis, M.D.

- Is a member of the Hematology and Clinical Microscopy Resource Committee of the College of American Pathologists which met in Chicago Illinois Sept. 28 and Sept. 29. While contributing to the continuing education of the laboratory community, this committee is also responsible for the hematology and clinical microscopy proficiency surveys in which hospital laboratories participate to maintain their accreditation by the CAP. In addition, Dr. Contis submits cases and discussions for the Clinical Microscopy portion of the surveys. She has also contributed to the recent publication of the Color Atlas of Body Fluids, published in 2006 by the CAP.

Fiona Craig, M.D.

- Co-directed the 19th Annual Clinical Flow Cytometry Course, with Dr. Albert Donnenberg, Department of Medicine, at the Hillman Cancer Center and Herberman Conference Center, UPMC Shadyside, from September 23 – 28th, 2007. Over 60 participants rotated through eight hands-on laboratory sessions covering diverse aspects of flow cytometric immunophenotyping. The accompanying lecture series attracted several local faculty and trainees, in addition to the course attendees.

Raymond Felgar, M.D.

- lectured at the University of Pittsburgh Cancer Institute XIX flow cytometry course on September 23, 2007. Title of Presentation: Application of Flow Cytometry to the WHO Classification of Hematologic Malignancy.
- became an Executive Editorial Board Member for the International Journal of Clinical and Experimental Pathology, a new pathology journal to be launched in January 2008.
- serves as Co-editor of Lichtman's Atlas of Hematology, an on-line companion atlas to Williams Hematology textbook (went live in Spring of 2007 and available through Access Medicine.
- participated as an Invited Mentor in the Scholarly Project Program, University of Pittsburgh, School of Medicine, September 2007.

In science the credit goes to the man who
convinces the world, not the man to whom
the idea first occurs.

Sir Francis Darwin, *Eugenics Review*, April 1914
(1848 - 1925)



Sara A. Monaghan, M.D.

- Attended the ASCP committee meeting for Hematopathology CheckPath in New Orleans on 10/20/07. As a member she submits cases, participates in selection of cases, and writes educational discussions for the four quarterly surveys that are used nationally for competency assessment and measurement of diagnostic skills of subscribing participants.
- Attended USCAP meeting in San Diego and on 3/26/07 presented a poster, also a published abstract: Monaghan SA, Doty KD, Swerdlow SH, Craig FE. Implementation of flow cytometry analysis of myeloid populations in a high volume clinical laboratory. *Mod Pathol.* 2007 Mar; 20(Suppl. 2): 353A.
- Is assistant director of MS2 Hematology Course, and coordinated the pathology component of the course with the clinical medicine component. In 2007, she gave 1 lecture (100-150 students) and organized 3 workshops each given to 8 small groups (comprised of 16 students and 1 facilitator). She will continue in this role in 2008.
- Lectured at the 2007 Spring Meeting, Pennsylvania Association of Pathologists, Harrisburg, Pennsylvania, April 14th, 2007, "JAK2 V617F: A new tool to diagnosis *BCR/ABL* negative chronic myeloproliferative disorders."
- Initiated and will continue to provide ongoing direction for the hematology component for the continuing education conference for Division of Clinical Chemistry and Hematology of Central Laboratory Services at UPMC Presbyterian.
- Continues to serve on the ASCP Resident Inservice Examination (RISE) and Fellowship Inservice Hematopathology Examination (FISHE) committees. ASCP provided its first FISHE examination in Spring 2007. As a member of these committees, she wrote, solicited and chose questions. She reviewed the outcomes and planned for improvement of these competency assessment tools, which are used by most U.S. Pathology Residency Programs and many Hematopathology fellowship programs. The RISE examination is also beginning to be used internationally.
- Served as an College of American Pathologists inspector for Hematology and Coagulation, Baptist Laboratories, Memphis TN (9/17/07 and 9/18/07).
- Published book chapter: Monaghan SA, Kroft SH: Red blood cell and hemoglobin disorders. In Hematopathology, a volume in the series, Foundations in Diagnostic Pathology. Ed. Eric D. Hsi. Churchill Livingstone Elsevier. 2007.

Christmas Day at Pitt

Pitt's Oakland Campus will host a Second Annual Salvation Army Christmas Day dinner for the homeless and needy. Over 400 individuals are expected to be served this year. The Pitt Volunteer Office will prepare gift bags and hats and gloves for those who attend. If you would like to donate a new hat and glove set for this event, please drop it off at 710 Alumni Hall by December 10. Alternatively, you may drop off your item at S-410 BST and we will be sure that it is delivered to Alumni Hall. For more information regarding this event, contact Gwen Watkins at 412.624.7702 or Chris Szalkuski at 412.648.1040.

Thank you for any consideration you give this request.

SUMMER UNDERGRADUATE RESEARCH PROGRAM (SURP) UPDATE

It's that time of year again! The Pathology arm of the Summer Undergraduate Research Program (SURP) is looking for faculty willing to host college undergraduates in their laboratories for a 10-week scientific research experience this coming summer. SURP is a highly competitive outreach program, specifically designed to recruit high quality students into applying for graduate degrees through the University of Pittsburgh School of Medicine (UPSOM) programs such as the Interdisciplinary Biomedical Graduate Program and the Medical School. As the reputation of our program has grown, we have begun to attract high quality students from Universities such as Cornell and MIT, with the average GPA approximately 3.8.

The specifics of the program are as follows:

- The cost to the individual investigator is \$3500.00. This year, there will also be competitive supplemental funding for three members of UPCI and possibly a stipend from UPSOM. Please contact me at 412-648-9690 or wmars@pitt.edu if you are interested in learning more about these funding opportunities.
- The program will run from May 27-August 1. Students are expected to have a specific project that they work on full time. They are also expected to attend supplemental programming 1-2 hours a week. At the end of the experience they must write an abstract and do a 10-minute power point presentation of their work.
- Student housing and travel will be provided by UPSOM.

The success of this program relies on quality mentors well as quality students. Part of our past success has been due to participation of interested faculty such as you. In addition, we have implemented several techniques designed to attract the highest quality students to our program such as a shared online application process. I would venture that many of you who have participated as SURP mentors in the past can attest to the quality of the students that we are attracting.

If you have any questions or are willing to be a mentor this year, please contact me at 412-648-9690, or via e-mail at wmars@pitt.edu. The application process has already begun.

Thanks so much!

Wendy M. Mars, Ph.D.
Director, Pathology SURP and
CMP Graduate Program

CELLULAR AND MOLECULAR PATHOLOGY PROGRAM UPDATE

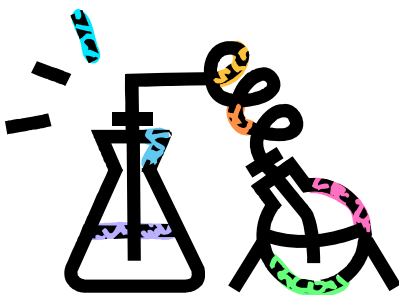
It's hard to believe but it is fast approaching one year since I took over the CMP program from Bob Bowser! It's been a busy and rewarding year, and I am happy to report that our program continues to thrive as we grow both our student and faculty numbers. In September of 2006, CMP began the year with 31 students in the program. During the course of the year, seven students graduated; however, this past September we added an additional 10 new students (eight from IBGP and two from MSTP), making our 2007 starting number 34.

Currently, our active CMP faculty number has grown to 58, including three faculty at other institutions with graduate students who remain a part of our program. Eleven members are new to CMP, either as newly inducted graduate faculty (Henry Dong, Eric Lagasse, Yong Li, Denise O'Keefe, Steven Shapiro, Zhou Wang) or as secondary appointments to our program (James Becker, Richard Chaillet, Yuan Chang, Paula Clemens, Bill Saunders).

A major CMP highlight occurred on October 24; CMP students hosted this year's BGSA (biomedical graduate student association) symposium. The yearly BGSA symposium is a completely student run event that brings together all graduate students in the SOM. Jason He, CMP graduate student (Marie deFrances, advisor) was selected by an independent committee to give one of the oral student presentations. The invited speaker was Mina Bissell, PhD who gave the Daisuke Nakada Memorial lecture after a warm introduction by Dr. Levine. In addition to the truly remarkable job that a sub-committee of CMP students did putting together the symposium, I am especially proud to report the general role that our CMP students play in the BGSA. Three of the current BGSA officers (president, vice-president, and treasurer) are CMP students (Michelle Manni, Laura Voegtly, Sam Cherra, respectively).

One last thing--a reminder that if you are interested in having issues brought before the CMP steering committee, share them with either our CMP administrator, Shari Tipton (tiptonsl@upmc.edu), or me (wmars@pitt.edu). Also, if you are aware of any outstanding faculty members who are not currently members of CMP but who would be eligible and have a possible interest in joining our program, let me know.

Wendy M. Mars, Ph.D.
**Director, Pathology SURP
and CMP Graduate Program**



HIGHLIGHTS

John G. Lunz III

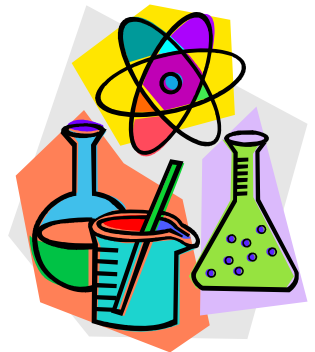
John G. Lunz, III successfully completed his PhD dissertation defense on Inhibition of Liver and Bone Marrow Derived Dendritic Cell Maturation and Function by Interleukin 6 Activation of Signal Transducer and Activator of Transcription-3. While this was quite an accomplishment in itself, John also was chosen as a recipient of a postdoctoral fellowship funded by a National Institute of Allergy And Infectious Diseases training grant for interdisciplinary training in transplantation biology. He is one of two trainees selected for their outstanding potential and ability to address fundamental questions in transplantation biology. Congratulations to John on his well-deserved achievements.

Joyce Marcoz

Medical Secretary III from Transplant Pathology has been chosen to receive the UPMC ACES award for outstanding performance. Only 4% of all UPMC employees receive this award. A luncheon honoring Joyce and other winners will be held on Monday, October 22nd. Joyce will attend a formal dinner in November.

Chad Rund, MD

Received the 2007 Rodger C. Haggitt Gastrointestinal Pathology Society USCAP Award as a runner up for the best presentation by a resident in gastrointestinal pathology for his work on solid pseudopapillary tumors of the pancreas: Array Comparative Genomic Hybridization (aCGH) Analysis of Solid Pseudopapillary Tumors of the Pancreas CR Rund, K Lee, H Zeh, K Cieply, S Dacic, AM Krasinskas.



Marie Defrances, M.D., Ph.D. and Mona Melhem, M.D.

Directed a Sunrise Series for Women Faculty and Fellows Session on November 14. Presented "How to Effect Change in Your Department: Lessons from the Pathology Women's Task Force" See website for upcoming lectures: http://www.oacd.health.pitt.edu/programs_sunriseseries.html

Csaba Galambos, M.D.

Welcomed a new son, Peter Clayton Galambos was born 7/5/07.



Matthew Krasowski, M.D.

Welcomed his third daughter, Miriam Barbara born August 14 at Magee, 8 lbs. 1 oz.

Sara Monaco, M.D.

Welcomed a daughter Julia Ann, born on September 25 at 10:51 p.m. 8 lbs and .5 oz, 20.5 inches.

Congratulations!

Ewa C.S. Ellis, Ph.D.

Welcomed triplets September 27. Emma 3 lbs. 8 oz; Samuel 3 lb 10 oz and Elin 3 lbs 5 oz.

PRESENTATIONS

George K. Michalopoulos, M.D., Ph.D.

- Invited speaker for the 2007 Joint Conference of the CTS-IPITA-IXA in Minneapolis Minnesota September 17, 2007. Session title was Regeneration and Growth Factors. Lectured on “Hepatocyte Regeneration.”

Paul Monga, M.D.

- invited speaker at the 2nd Mount Sinai Liver Cancer Program entitled “Clinical and Molecular Understanding of HCC”, “Wnt/b-catenin signaling in Liver: Promises and Perils,” Mount Sinai School of Medicine, New York, June, 2007.
- “Wnt/b-catenin signaling in Liver Health and Disease,” Penn State University, Hershey Medical Center, July, 2007.
- visiting professor at the Digestive Health Center, Cincinnati Children's Hospital “Wnt/b-catenin in Liver,” Endoderm Club Meeting, Cincinnati Children's Hospital Medical Center, September, 2007.
- “Novel Mechanisms in Liver Health & Disease,” Seminar speaker, Department of Pathology, University of Pittsburgh, October, 2007.

Parmjeet Randhawa, M.D.

- BK virus screening: why, when and how?. 3rd International Transplant Infectious Disease Conference. Prague, Czech Republic, September 30, 2007.
- Progress in the discovery of anti-BK virus drugs. International Conference on polyomaviruses and human disease. Barcelona, Spain, October 2, 2007.

Csaba Galambos, M.D.

- “Molecular Mechanisms of Pulmonary Vessel Development”, Pulmonary Pathology Symposium, Society of Latin American Pediatric Pathologist (SLAPPE), Punta de Estes, Uruguay, September 24-25, 2007.

Uma Rao, M.D.

- “Bone and Soft Tissue Lesions,” Department of Pathology, UT Southwestern Medical Center, Dallas TX, October 9, 2007.

Cary Wu, Ph.D.

- Chair, Session of Cell Migration, Fibronectin, Integrins and Related Proteins Gordon Conference, April 22-27, 2007, Il Ciocco, Italy.
- Invited speaker in The Federation of European Biochemical Societies FEBS workshop on “Trends in Transient Interactions between Biological Macromolecules”, May 16-19, Seville, Spain.

**PATHOLOGY
RESEARCH SEMINAR
SERIES**

**Annual A. Julio Martinez
Memorial Lecture**

“TDP-43 proteinopathies: a new class of neurodegenerative diseases”

Virginia Lee, M.D.

Professor

Department of Pathology &
Laboratory Medicine,
University of Pennsylvania
School of Medicine,
Philadelphia, PA

Wednesday, November 28, 2007

4:00 p.m.

S-100 Biomedical Science Tower

“Autophagy, a Cellular Survival Mechanism in Cancer Cells:

Xiao-Ming Yin, M.D., Ph.D.

Associate Professor of Pathology

Department of Pathology
University of Pittsburgh

Wednesday, December 12, 2007

12:00 noon

1105BC Conference Center

“Fatty Acid Synthase as a Metabolic Oncogene in Prostate Cancer”

Massimo Loda, M.D.

Professor of Pathology
Dana Farber Cancer Institute
Boston, MA

Wednesday, December 19, 2007

12:00 noon

1104 UPMC Conference Center
Scaife Hall

PUBLICATIONS

Monga SP, Gerlach JC. Human fetal hepatocyte behavior in dynamic 3-D perfusion bioreactor culture. INVITED REVIEW. J of Organ Dysfunction. March 08, 2007. 1-10 (iFirst article).

Zeng G, Apte U, Cieply B, Monga SP. siRNA-mediated b-catenin knockdown in human hepatoma cells results in decreased growth and survival. Neoplasia (IN PRESS).

Guo D, Sarkar J, Suino-Powell K, Xu Y, Matsumoto K, Jia Y, Yu S, Khare S, Haldar K, Rao MS, Foreman JE, Monga SP, Peters JM, Xu HE, Reddy JK. Induction of nuclear translocation of CAR by PPARalpha synthetic ligands in mouse liver. J Biol Chem. 2007 Oct 25; [Epub ahead of print]

Apte U, Thompson M, Cui S, Liu B, Cieply B, Monga SP. Wnt/b-catenin signaling mediates oval cell response in rodents. Hepatology. 2007 Oct 10; [Epub ahead of print]

Muller P, Monga DK, Tan X, Micsenyi A, Loizos N, Monga SP. PDGFRa: A novel therapeutic target in HCC. Molecular Cancer Therapeutics, 2007 Jul;6 (7):1932-41.

Ding, W-X, H-M. Ni, X. Chen, J. Yu, L. Zhang and X.-M. Yin. A coordinated action of Bax, PUMA and p53 promotes MG132-induced mitochondria activation and apoptosis in colon cancer cells. *Mol. Cancer Ther.*, 6:1062-1069, 2007

Feng, R, H.-M. Ni, S. Y. Wang, I. L. Tourkova, M.R. Shurin, H. Harada and X.-M. Yin. Cyanidin-3-rutinoside, a natural polyphenol antioxidant, selectively kills leukemic cells by induction of oxidative stress. *J. Bio. Chem.*, 282: 13468-13476, 2007

Zhao, Y, D. DiFrancesca, X. Wang, R. Zarnegar, G. Michalopoulos and X. M. Yin. Promotion of Fas-mediated Apoptosis in Type II Cells by High Doses of Hepatocyte Growth Factor Bypasses the Mitochondrial Requirement. *J. Cell Physiol*, 213: 556-563, 2007.

*Please submit newsworthy items as they
happen to Szalkuskict@upmc.edu.*

Thanks !

**PATHOLOGY
RESEARCH SEMINAR
SERIES**

“Systems Biology Approach to the Study of Motor Neuron Disease: Proteomics, Metabolomics and Genomics to identify Biomarkers for ALS”

Robert Bower, Ph.D.

Associate Professor of Pathology
Director, Center for ALS Research
University of Pittsburgh
Wednesday, January 9, 2008
12 noon
1104 UPMC Conference Center
Scaife Hall

“Why Calcium Does Not Cure Osteoporosis: New Models of Skeletal Synthesis and Degradation”

Harry Blair, M.D.

Professor of Pathology
Department of Pathology
University of Pittsburgh
Wednesday, January 16, 2008
12 noon
1105AB Conference Center
Scaife Hall

“Pulmonary Fibrosis: RAGE, It’s Not Just for Anger Any more”

Tim Oury, M.D., Ph.D.

Associate Professor of Pathology
Department of Pathology
Division of Molecular Diagnostics
University of Pittsburgh
Wednesday, January 23, 2008
12 noon
1105AB Conference Center
Scaife Hall

Ding, W-X, H-M. Ni, W. Gao, T. Yoshimori, D.B. Stolz, D. Ron and X-M. Yin. Linking of autophagy to ubiquitin proteasome system is important for the regulation of endoplasmic reticulum stress and cell viability. *Amer. J. Path.* 171: 513-524, 2007.

Cao, Guodong, J. Xing, X. Xiao, A.K.F. Liou, Y. Gao, X.-M. Yin, R. S. B. Clark, S. H. Graham, and J. Chen. Critical role of calpain I in mitochondrial release of apoptosis-inducing factor in ischemic neuronal injury. *J. Neuroscience*, 27 (35): 9278-9293, 2007

Vang, R., gown, A.M., Zhao, C., Barry T.S., isacson, C., Richardson, M.S., Ronnett, B.m. Ovarian mucinous tumors associated with mature cystic teratomas: morphologic and immunohistochemical analysis identifies a subset of potential teratomatous origin that shares features of lower gastrointestinal tract mucinous tumors more commonly encountered as secondary tumors in the ovary. *Am. J. Surg. Pathol.* 2007 June:31(6):854-69.

Zhao, C., Bratthauer G.L., Barner, R., Vang, R. Diagnostic utility of TW1 immunostaining in ovarian sertoli cell tumor. *Am. J. Surg. Pathol.* 2007 Sep:31(9):1378-86.

Zhao, C., Austin, R.M. Human papillomavirus DNA detection in ThinPrep Pap test vials is independent of cytologic sampling of the transformation zone. *Gynecol Oncol.* 2007 Sep 12.

Zhao, C., Elishaev, E., Yuan, K.H., Yu, J., Marshall, Austin R., Very low human papillomavirus DNA prevalence in mature women with negative computer-imaged liquid-based Pap tests. *Cancer* 2007 Oct. 25:111(5):292-7.

Deutsch G, Young LR, Deterding R, Fan LL, Dell SD, Bean JA, Brody A, Langston C, and the Pathology Cooperative Group: Albright E, Askin F, Baker P, Chou P, Cool C, Coventry S, Cutz E, Davis MM, Dishop MK, Galambos C, Patterson K, Travis WD, Wert S, White F, M.D. Diffuse lung disease in young children: consensus classification, spectrum of disorders and clinical features in a multi-center multidisciplinary review. (*American Journal of Respiratory and Critical Care Medicine*).

Parmjeet Randhawa, M.D. received funding from the NIH as PI for the grant: *Polymavirus infection after kidney transplantation. Dates: 5/1/07-3/31/12. Total cost: \$3,424,840. Congratulations!*

**PATHOLOGY
RESEARCH SEMINAR
SERIES**

Title TBA

Nick Giannoukakis, Ph.D.

Assistant Professor of Pathology

Diabetes Institute

Rangos Research Center

Wednesday, January 30, 2008

12 noon

1105AB Conference Center

Scaife Hall

Title: TBA

Steven D. Shapiro, M.D.

Professor and Chairman

Department of Medicine

Wednesday, February 6, 2008

12 noon

1104 Conference Center

Scaife Hall

“Modulation of Angiogenesis and Inflammation by VEGI (TNSFF15)”

Luyuan Li, Ph.D.

Associate Professor of Pathology

Department of Pathology

University of Pittsburgh Cancer

Institute

Wednesday, February 13, 2008

12 noon

1104 Conference Center

Scaife Hall

“Met and Malignancy”

Annual Maud Menten Seminar

George Vande Woude, Ph.D.

Director, Van Andel Research Institute

Grand Rapids, MI

Wednesday, February 27, 2008

12 noon

1105 AB Conference Center

Scaife Hall

Caltagarone J, Jing Z, and Bowser, R. (2007). Focal adhesions regulate A β signaling and cell death in Alzheimer's disease. *Biochim et Biophys Acta (BBA) – Molecular Basis of Disease*, 1772: 438-445.

Gruzman A, Wood WL, Alpert E, Prasad MD, Miller RG, Rothstein JD, Bowser R, Hamilton, R, Wood TD, Cleveland DW, Lingappa VR, and Liu J. (2007). Common molecular signature in SOD1 for both sporadic and familial amyotrophic lateral sclerosis. *Proc Natl Acad Sci USA*, 104: 12524-12529.

Dunckley T, Craig DW, Huentelman MJ, Pearson J, Szelinger S, Joshipura K, Halperin R, Stamper C, Letizia D, Hesterlee SE, Pestronk A, Levine T, Bertorini T, Graves MC, Mozaffar T, Jackson CE, Bosch P, Barohn R, Lomen-Hoerth C, Rosenfeld J, O'Connor DT, Zhang K, Crook R, Hutton M, Ryberg H, Mitsumoto H, Bowser R, Miller RG, Appel SH, and Stephan DA. (2007). Whole genome analysis of persons with sporadic amyotrophic lateral sclerosis. *New Eng J Med*, 357: 775-788.

ME Cource, R. Medina-Flores, M. Wong and CT Chu. (2007) Occult germ cell tumor presenting as spontaneous intracerebral hemorrhage. *Histopathol.*, 50: 789-793.

JH Zhu, C. Horbinski, F. Guo, S. Watkins, Y. Uchiyama and CT Chu (2007) Hippocampal long-term potentiation, memory and longevity in mice that overexpress mitochondrial superoxide dismutase. *Neurobiol. Learning Mem*, 87: 372-384.

CP Ramsey, CA Glass, MB Montgomery, KA Lindl, GP Ritson, LA Chia, RL Hamilton, CT Chu and KL Jordain-Sciutto. (2007) Expression of Nrf2 in Neurodegenerative Diseases. *J. Neuro-pathol. Exp. Neurol*, 66: 75-85.

K. Kiselyov, JJ Jennings, Y. Rbaibi and CT Chu (2007) Autophagy, mitochondria and cell death in lysosomal storage diseases. *Autophagy* 3:259-262.

SM Lulich, C. Horbinski, M. Patel and CT Chu. (2007) 6-Hydroxydopamine induces mitochondrial ERK activation. *Free Rad Biol Med*. 43: 372-383.

K. Onuma, CT Chu and DJ Dabbs (2007) asymptomatic giant cell (temporal) arteritis involving bilateral adnexa: Case report and literature review. *Int. J. Gynecol. Pathool*. 26:352-355.



**PATHOLOGY
RESEARCH SEMINAR
SERIES**

“Human Cancer Invasion and Metastasis: Roles of Angiopoietin-2, Integrins, Small GTPases and Beyond”

Shiyuan Cheng, Ph.D.

Associate Professor of Pathology
University of Pittsburgh Cancer
Institute

Wednesday, March 12, 2008
12 noon

1104 UPMC Conference Center
Scaife Hall

“Regulation of Cholangiocarcinoma Growth”

Gianfranco Alpini, Ph.D.

Professor of Medicine and Systems Bi-
ology and Translation Medicine
The Texas A & M University System
Health Sciences Center

Temple, TX
Wednesday, March 19, 2008
1105AB Conference Center
Scaife Hall

Title: TBA

Theresa Whiteside, Ph.D.

Professor of Pathology
University of Pittsburgh Cancer
Institute

Wednesday, March 26, 2008
1105AB Conference Center
Scaife Hall

CT Chu, E. Plowey, Y. Wang, V. Patel, and KL Jordan-Sciutto (2007) Location, location, location: Altered transcription factor trafficking in neurodegeneration. *J. Neuropathol. Exp. Neurol.*, 66:873-883.

Tourkova I.L., Shurin G.V., Wei S., Shurin M.R. Small Rho GTPases mediate tumor-induced inhibition of endocytic activity of dendritic cells. *J. Immunol.* 178(12): 7787-7793, 2007.

Shurin M.R., Smolkin Y.S. Immune-Mediated Diseases: Where do we stand? *Adv. Exp. Med. Biol.*, 601: 3-12, 2007.

Aalamian-Matheis M., Chatta G.S., Shurin M.R., Huland E., Huland H., Shurin G.V. Inhibition of dendritic cell generation and function by serum from prostate cancer patients: Correlations with serum free PSA. *Adv. Exp. Med. Biol.*, 601: 173-182, 2007.

Sevko A.L., Barysik N., Perez L., Shurin M.R., Gerein V. Differences in dendritic cell activation and distribution after intravenous, intraperitoneal and subcutaneous injection of lymphoma cells in mice. *Adv. Exp. Med. Biol.*, 601: 257-264, 2007.

Zhong H., Han B., Tourkova I.L., Lokshin A., Rosenbloom A., Shurin M.R., Shurin G.V. Low-Dose Paclitaxel Prior to Intratumoral Dendritic Cell Vaccine Modulates Intratumoral Cytokine Network and Lung Cancer Growth. *Clin. Cancer Res.* 13(18):5455-5462, 2007.

Shurin G.V., Yurkovetsky Z.R., Chatta G.S. Shurin M.R., Lokshin A. Alteration of soluble serum biomarkers in healthy aging. *Cytokines* 39(2): 123-129, 2007.

Ozolek JA, Jane EP, Krowsoski L, Sammak PJ. Human embryonic stem cells (HSF-6) show greater proliferation and apoptoses when grown on glioblastoma cells than mouse embryonic fibroblasts at day 19 in culture: Comparison of proliferation, survival, and neural differentiation on two different feeder cell types. *Stem Cells and Development* 2007;16:403-412.

Wu, C. Focal adhesion: a focal point in current cell biology and molecular medicine. *Cell Adhesion & Migration* (2007) 1 (1):13-18



Gkretsi, V., Mars, W. M., Bowen, W. C., Barua, L., Yang, Y., Guo, L., St.-Arnaud, R., Dedhar, S., Wu, C., and Michalopoulos, G. K. Loss of integrin linked kinase from mouse hepatocytes in vitro and in vivo results in apoptosis and hepatitis. *Hepatology* (2007) 45(4):1025-34.

Ren, B., Yu, Y. P., Gavel, T., Tseng, G. C., Wu, C., Chen, K., Kokkinakis, D., Rao, U., Nelson, J., Michalopoulos, G. M. and Luo, J.-H. Analysis of Integrin $\alpha 7$ Mutations In Prostate Cancer, Liver Cancer, Glioblastoma Multiforme and Leiomyosarcoma. *J Natl Cancer Inst.* (2007) 99(11):868-80.

Wang, Y., Chang, J., Chen, K.-D., Li, S., Li, J. Y.-S., Wu, C. and Chien, S. Selective Adapter Recruitment and Differential Signaling Networks by VEGF vs. Shear Stress. *Proc. Natl. Acad. Sci USA* (2007) 104(21):8875-9

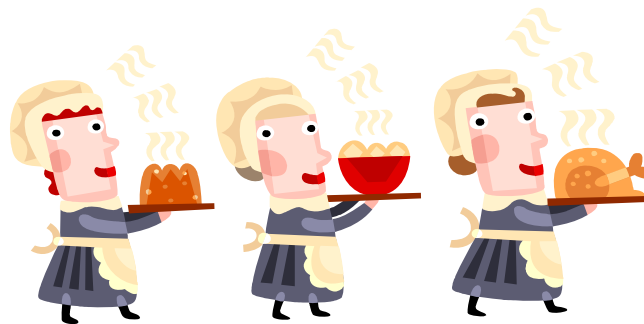
Li, Y., Dai, C., Wu, C. and Liu, Y. PINCH-1 promotes tubular epithelial to mesenchymal transition through interacting with integrin-linked kinase. *J. Am. Soc. Nephrol.* (2007) Jul 26 [Epub ahead of print]

Papachristou, D. J., Gkretsi, V., Tu, Y., Shi, X., Chen, K., Larjava, H., Rao, U. N. M. and Wu, C. Increased cytoplasmic level of migfilin is associated with higher grades of human leiomyosarcomas. *Histopathology* (2007) Aug 17 [Epub ahead of print]

Shi, X., Ma, Y-Q, Tu, Y., Chen, K., Wu, S., Fukuda, K., Qin, J., Plow, E. F. and Wu, C. The Mig-2/integrin interaction strengthens cell-matrix adhesion and modulates cell motility. *J. Biol. Chem.* (2007) 282(28):20455-66

Craig FE, Johnson LR, Harvey SA, Nalesnik MA, Luo J-H, Bhattacharya SD, Swerdlow SH. Gene expression profiling of Epstein-Barr virus-positive and -negative monomorphic B-cell post-transplant lymphoproliferative disorders. *Diagnostic Molecular Pathology* 16(3):158-168, 2007.

Craig, FE. Flow cytometric evaluation of B-cell lymphoid neoplasms. *Clinics in Laboratory Medicine* 27:487-512, 2007.



Happy Thanksgiving
Thursday, November 22, 2007

FITNESS FOR LIFE

Hello,

Just a note to let you know that the University of Pittsburgh is initiating a series of events related to healthy living. One of them will be a MyHealth Weight Race. The "Race" is meant to be a light-hearted fun competition consisting of teams that will work to achieve a particular weight loss goal. It is not set up to put anyone on the spot or to pressure folks needlessly. Basically, teams of five will form and decide on a team name. Each person will decide on a weight loss goal however there is a minimum of 25 pounds per team member and no more than two pounds a week/person is recommended. Criteria for establishing your goal will be distributed. Once you sign up, you will receive promotional items such as a pedometer and "Tales from the Scales" by email. You will self-report your weight weekly via email or by phone and there will be three "official" weigh-in days. The program will last 12 weeks with registration taking place January 7-18. The winners of the "contest" will be based on the teams' percentage of goal achieved. *Each person* of the top three teams will receive a \$100 gift card; 4th-6th place teams will receive a \$50 gift card, 7th-9th place teams will receive a \$25 gift card and the 10th place team will receive a \$10 gift card.

If you are interested in forming a team or participating on a team, please contact Chris Szalkuski (szalkuskict@upmc.edu) or Linda Askren (askrenl@upmc.edu) and we will fill you in on the specific details of the MyHealth Weight Race. We hope to hear from you!

Chris Szalkuski and Linda Askren
Fitness for Life Champion Coordinators



"I can do this... I will do this... two pounds a week is nothing..."

Calendar of Events

December 10—look for brochure in campus mail regarding this initiative.

January 7-18 register for MyHealth Weight Race via phone or email.

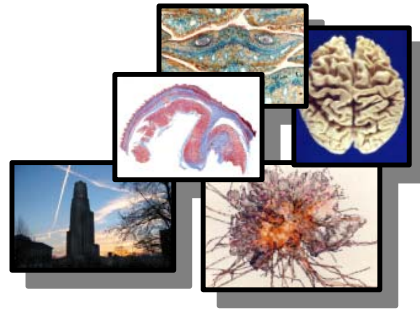
January 28 First issue of "Tales from the Scales" will be sent to all enrolled.

January 29 "Using a Pedometer" will be sent to each participant who received the pedometer at initial weigh-in.

Department of Pathology

Photographic Services

- Need large posters or art prints?
- Photos or composites for journal submission?
- Passports or recredentialling photos?
- Graphic Design and Illustrations?
- Your old 35mm slides scanned into digital formats?
- B&W and Color printing?
- Don't quite have enough time to put that poster together?



Let us do your art work for you!

We can provide you with a wide variety of digital and photographic services to meet your needs. We offer professional quality work with exceedingly quick turn around times.

You have seen our Posters at :

USCAP
AACR
FASEB
Science 2007
Pathology Retreat



Brand New
HP Designjet
Z2100

We are conveniently located in 109 Scaife Hall.
Hours of operation: 8:30-a.m.- 5:00 p.m. Monday thru Friday.

Contact **Linda Shab** or **Tom Bauer** at : Phone: 412-648-9525
Email: photolab@pitt.edu

Professional Art Work in Record Time!

109 Scaife Hall

412.648.9525



The Ellis Triplets.... Pumpkins anyone?



The Turkeys for us turkeys....



A Thanksgiving Feast November 15, 2007



The Master of gatherings... Wendy J... another great layout! Thanks Wendy!



And we can't forget Judy... our other Mastermind of Gatherings along with special guest appearance of Lovan