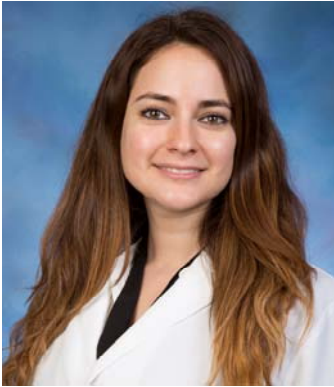


**University of Pittsburgh Medical Center
Department of Pathology
2017-2018 Residents**

PGY-4



**Lama Farchoukh, MD (AP/CP)
Chief Resident**

lama.farchoukh@upmc.edu

Medical School: American University of Beirut, Beirut, Lebanon (2009)

Planned Fellowships: Cytopathology, GI Pathology

Recent Publication: Farchoukh L¹, Kuan SF, Dudley B, Brand R, Nikiforova M, Pai RK. MLH1-deficient Colorectal Carcinoma With Wild-type BRAF and MLH1 Promoter Hypermethylation Harbor KRAS Mutations and Arise From Conventional Adenomas. Am J Surg Pathol. 2016 Oct;40(10):1390-9. (PMID: 27438990)



**Michelle Heayn, MD, PhD (AP/CP)
Chief Resident**

heaynm@upmc.edu

Medical/Graduate School: Temple University School of Medicine, Philadelphia, PA (2014)

Planned Fellowship: Gynecological/ Breast Pathology

Hobbies/ Interests: Crafting (sewing, knitting, etc)

Recent Publication: Noel J, Wang H, Hong N, Tao J, Sorokina E, Debolt K, Heayn M, et al. PECAM-1 and caveolae form the mechanosensing complex necessary for NOX2 activation and angiogenic signaling with stopped flow in pulmonary endothelium. Am J Physiol Lung Cell Mol Physiol 2013; 305(11): L805-18.(PMID 24077950)



Dinesh Pradhan, MD, MBBS (AP/CP)

pradhand@upmc.edu

Medical School: Gauhati Medical College, Guwahati, Assam, India (2004)

Planned Fellowship: Dermatopathology

Current Research: Conjunctival Melanoma, GYN SCC, PD-L1

Hobbies/ Interests: Traveling, Classical music, Cricket

Recent Publication: Roy S, Pradhan D, Ernst WL, Mercurio S, Najjar Y, Parikh R, Parwani AV, Pai RK, Dhir R, Nikiforova MN. Next-generation sequencing-based molecular characterization of primary urinary bladder adenocarcinoma. Mod Pathol. 2017 Aug;30(8):1133-1143 (PMID: 28548125)

Michelle Stram, MD, ScM (AP/CP)

strammn@upmc.edu



Medical School: State University of New York at Upstate Medical University, Syracuse, NY (2014)

Graduate School: Johns Hopkins School of Public Health, Baltimore, MD (2008)

Planned Fellowship: Forensic Pathology, Pathology Informatics

Current Research: Algorithm for urinalysis with reflexed urine culture. Validating an immunohistochemistry panel for diagnosing clear cell carcinoma of the endometrium

Hobbies/ Interests: Backpacking and traveling abroad, trying out new restaurants and bars

Recent Publication: Stram M, Liu S, Singhi AD. Chronic Pancreatitis. Surg Pathol Clin. 2016 Dec;9(4):643-659 (PMID 27926364)

Christopher Suci, MD, MS (AP/CP)

suciucn@upmc.edu



Medical/Graduate School: Tulane University School of Medicine, New Orleans, LA (2014)

Planned Fellowships: Molecular Genetic Pathology

Current Research: Neuropathology

Hobbies/ Interests: Tennis, rowing, music, reading, sports

Jennifer Yoest, MD (AP/CP)

yoestjm@upmc.edu



Medical School: University of Pittsburgh School of Medicine, Pittsburgh, PA (2014)

Planned Fellowship: Molecular Pathology

Current Research: Side effects of Immune Checkpoint Inhibitors; Effects of decalcification on IHC

Hobbies/ Interests: Sewing, cooking, crafting, violin

PGY-3



Dayne Ashman, MD (AP/CP)

ashmand@upmc.edu

Medical School: University of the West Indies, Kingston, Jamaica (2011)

Planned Fellowship: Genitourinary Pathology

Current Research:

Comparison of Aptima, Cervista and Hybrid Capture 2 HPV detection and follow up results in patients with HSIL paps in a large academic women center.

Hobbies/ Interests: Football, track and field

Nicholas J. Barasch, MD, MS (AP/CP)

baraschn@upmc.edu



Medical/Graduate School: Stony Brook School of Medicine, Stony Brook, New York (2015)

Planned Fellowship: Hematopathology, Surgical Pathology

Current Research: Translocations in acinic cell carcinoma, lymphoproliferative diseases of the skin and digital and visual application in pathology

Hobbies/ Interests: Singing, hiking, dog training

Recent Publication: Barasch N¹, Gong X¹, Kwei KA², Varma S¹, Biscocho J¹, Qu K², Xiao N³, Lipsick JS¹, Pelham RJ², West RB¹, Pollack JR¹. Recurrent rearrangements of the Myb/SANT-like DNA-binding domain containing 3 gene (MSANTD3) in salivary gland acinic cell carcinoma. PLoS One. 2017 Feb 17;12(2):e0171265. doi: 10.1371/journal.pone.0171265. eCollection 2017. (PMID: 28212443)

Shweta Bhavsar, MBBS, MD (AP/CP)

bhavsars@upmc.edu



Medical/Graduate School: B.J Medical College, Pune, India (2007)

Planned Fellowship: Hematopathology, Gynecological/ Breast Pathology

Hobbies/ Interests: Music, singing, dancing

Recent Publication: Agale SV, Bhavsar S, Choudhury B, Manohar V. Isolated intramedullary spinal cord cysticercosis. Asian J Neurosurg. 2012 Apr; 7(2): 90-2. (PMID: 22870160)



Sarah Hugar, MD (AP/CP)
Chief Resident

bookerse@upmc.edu

Medical School: Emory University School of Medicine, Atlanta, GA (2015)

Planned Fellowship: Gynecological/ Breast Pathology

Current Research: Flat epithelial atypia; Endometrial adenocarcinoma

Hobbies/ Interests: Running, hiking, music, playing with my dog Jack



Li Liu, MD, PhD (CP)

liul4@upmc.edu

Medical School: China Medical University, Shenyang, China (2006)

Graduate School: Northwestern University, Chicago, IL

Planned Fellowship: Molecular Pathology

Hobbies/ Interests: Reading, spending time with children

Recent Publication: Liu L, Tamama K, Peck-Palmer OM. Selenium overload? Clin. Chem. 2016; 62: 658. (PMID: 27022127)



Oscar Francisco Lopez Nunez, MD (AP/CP)

lopeznunezof@upmc.edu

Medical School: Universidad Dr. Jose Matias Delgado, Escuela de Medicina, Antiguo Cuscatlan, El Salvador (2012)

Planned Fellowship: Pediatric Pathology

Research: Pediatric soft tissue tumors, pediatric cytopathology, developmental pathology, digital imaging

Hobbies/ Interests: Hiking, jogging, reading, gardening, family time



Daniel Marker, MD, PhD (AP/CP)
Chief Resident

markerdf@upmc.edu

Medical School: University of Rochester, Rochester, NY (2015)

Planned Fellowship: Neuropathology

Research: Neuroinflammation, HIV, Small molecule kinase inhibitors

Hobbies/ Interests: Ultimate Frisbee, Home Improvements

Recent Publication: Puccini JM, Marker DF, Fitzgerald T, Barbieri J, Kim CS, Miller-Rhodes P, Lu SM, Dewhurst S, Gelbard HA. Leucine-rich repeat kinase 2 modulates neuroinflammation and neurotoxicity in models of human immunodeficiency virus 1-associated neurocognitive disorders. J Neurosci. 2015 Apr 1; 35(13): 5271-83. (PMID: 25834052)

Thomas Pearce, MD, PhD (AP)



pearcetm@upmc.edu

Medical School: Washington University, St. Louis, MO (2014)

Planned Fellowship: Neuropathology

Current Research: Neurophysiology of motor control

Hobbies/ Interests: Programming, tennis, homebrewing

Recent Publication: Pearce TM¹, Moran DW. Strategy-dependent encoding of planned arm movements in the dorsal premotor cortex. *Science*. 2012 Aug 24;337(6097):984-8. doi: 10.1126/science.1220642. Epub 2012 Jul 19. PMC3667666

Eric Statz, MD (AP/CP)



statzec@upmc.edu

Medical School: University of Wisconsin School of Medicine and Public Health, Madison, WI (2015)

Planned Fellowship: Gynecological/ Breast Pathology

Current Research: Immunohistochemistry in uterine smooth muscle tumors

Hobbies/ Interests: Hiking, cooking, running, playing with my beagle, travel

Recent Publication: Willette AA, Johnson SC, Birdsill AC, Sager MA, Christian B, Baker LD, Craft S, Oh J, Statz E, Hermann BP, Jonaitis EM, Kosciak RL, La Rue A, Asthana S, Bendlin BB. Insulin resistance predicts brain amyloid deposition in late middle-aged adults. *Alzheimers Dement*. 2015 May; 11(5): 504-510.e1. (PMID: 25043908)

Bryan Stevens, MD (AP/CP)



stevensba@upmc.edu

Medical School: University of Toledo College of Medicine, Toledo, OH (2015)

Planned Fellowship: Medical Microbiology

Hobbies/ Interests: Skiing, Running, Cooking

Recent Publication: Thomas DL¹, Manners J^{2,3}, Marker D⁴, Mettenburg J^{2,3}, Murdoch G¹, Stevens B⁴, Wang G¹, Wiley C¹. CD8-Positive T-Cell Leukoencephalitis With Astrocytopathy Clinically Presenting as Neuromyelitis Optica. *J Neuropathol Exp Neurol*. 2017 May 1;76(5):347-357. doi: 10.1093/jnen/nlx015. (PMID: 28340257)

PGY-2

Eric Carlsen, MD, PhD (AP/CP)

-

Medical School: University of Texas Medical Branch, Galveston, TX (2016)

Planned Fellowship: Hematopathology

Current Research: IgG4 expression in marginal zone lymphomas

Hobbies/ Interests: Cooking, homebrewing, music composition, hiking/camping

Recent Publication: Chen F, Cao A, Yao S, Evans-Marin HL, Liu H, Wu W, Carlsen ED, Dann SM, Soong L, Sun J, Zhao Q, Cong Y. mTOR Mediates IL-23 Induction of Neutrophil IL-17 and IL-22 Production. J Immunol. 2016 May 15; 196(10): 4390-9. (PMID: 27067005)

Tanner Freeman, MD, PhD (AP/CP)

freemantj@upmc.edu



Medical/Graduate School: Vanderbilt Medical School, Nashville, TN (2016)

Planned Fellowship: Molecular, Gastrointestinal Pathology

Current Research: Wnt signaling in cancer

Hobbies/ Interests: Running

Recent Publication: Barrett CW, Reddy VK, Short SP, Motley AK, Lintel MK, Bradley AM, Freeman T, Vallance J, Ning W, Parang B, Poindexter SV, Fingleton B, Chen X, Washington MK, Wilson KT, Shroyer NF, Hill KE, Burk RF, Williams CS. Selenoprotein P influences colitis-induced tumorigenesis by mediating stemness and oxidative damage. J Clin Invest. 2015 Jul 1; 125(7): 2646-60. (PMID: 26053663)

Claudia Maria Salgado, MD, PhD (AP/CP)

salgadocm2@upmc.edu



Medical/Graduate School: Federal University of Juiz de Fora, Juiz de Fora, Brazil (1992)

Planned Fellowship: Dermatopathology

Current Research: Pediatric melanocytic lesions and tumors

Hobbies/ Interests: Traveling, reading, cooking

Recent Publication: Feingold B^{1,2}, Salgado CM³, Reyes-Múgica M³, Drant SE¹, Miller SA¹, Kennedy M⁴, Kellman P⁵, Schelbert EB^{2,4,6}, Wong TC^{4,6}. Diffuse myocardial fibrosis among healthy pediatric heart transplant recipients: Correlation of histology, cardiovascular magnetic resonance, and clinical phenotype. Pediatr Transplant. 2017 Aug;21(5). doi: 10.1111/ptr.12986. Epub 2017 Jun 2. (PMID: 28574157)



John M. Skaugen, MD (AP/CP)

skaugenjm@upmc.edu

Medical School: University of Texas Health Sciences Center at Houston McGovern Medical School, Houston, TX (2016)

Planned Fellowship: ENT, Molecular Pathology

Hobbies/ Interests: Gardening, reading, movies



Jacob Smith, MD (AP/CP)

smithja15@upmc.edu

Medical School: Paul L. Foster School of Medicine Texas Tech University Health Sciences Center, El Paso, TX (2016)

Planned Fellowship: Pediatric Pathology

Hobbies/ Interests: Finance, Sports, Food, Learning Java

Recent Publication: Li J, Arévalo MT, Chen Y, Posadas O, Smith JA, Zeng M. Intranasal immunization with influenza antigens conjugated with cholera toxin subunit B stimulates broad spectrum immunity against influenza viruses. Hum Vaccin Immunother. 2014; 10(5): 1211-20. (PMID: 24632749)

PGY-1



Lara Berklite, MD (AP/CP)

grahamle2@upmc.edu

Medical/Graduate School: University of Cincinnati College of Medicine, Cincinnati, OH (2017)

Planned Fellowship: Pediatrics, GI, Transfusion/Blood Bank

Hobbies/Interests: Reading, Running, Writing

Recent Publication: O'Malley KJ¹, Eisermann K, Pascal LE, Parwani AV, Majima T, Graham L, Hrebinko K, Acquafondata M, Stewart NA, Nelson JB, Yoshimura N, Wang Z. Proteomic analysis of patient tissue reveals PSA protein in the stroma of benign prostatic hyperplasia. Prostate. 2014 Jun;74(8):892-900. doi: 10.1002/pros.22807. Epub 2014 Apr 7. (PMID: 24711254)

Daniel Buhlinger, MD, BS (AP/CP)



buhlingerdj@upmc.edu

Medical/Graduate School: Michigan State University College of Human Medicine, East Lansing, MI (2017)

Planned Fellowship: Undecided

Hobbies/ Interests: Soccer, running, reading, playing piano

Recent Publication: Fischer DL^{1,2}, Kemp CJ¹, Cole-Strauss A¹, Polinski NK^{1,3}, Paumier KL¹, Lipton JW^{1,4}, Steece-Collier K^{1,4}, Collier TJ^{1,4}, Buhlinger DJ¹, Sortwell CE^{5,4}. Subthalamic Nucleus Deep Brain Stimulation Employs trkB Signaling for Neuroprotection and Functional Restoration. J Neurosci. 2017 Jul 12;37(28):6786-6796. doi: 10.1523/JNEUROSCI.2060-16.2017. Epub 2017 Jun 12. (PMID: 28607168)



Daniel Geisler, BA, BS, MS, MD (AP/CP)

geislerdl@upmc.edu

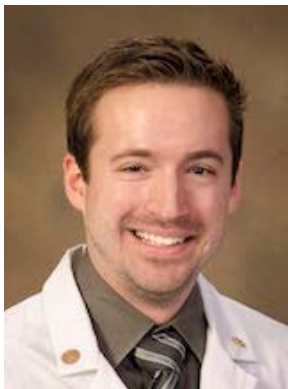
Medical/Graduate School: University of Virginia, Charlottesville, VA (2017)

Planned Fellowship: GI, ENT, Placental/Perinatal Pathology

Current Research: Placental, Pediatric

Hobbies/ Interests: Pittsburgh sports, running, concerts, local festivals with my wife

Blake Gibson, MD (AP/CP)



gibsonba@upmc.edu

Medical/Graduate School: University of Arizona College of Medicine, Tucson, AZ (2017)

Planned Fellowship: Undecided

Current Research: Patient Centered Pathology

Hobbies/Interests: Cooking with my wife

Recent Publication: Nguyen MM¹, Martinez JA, Hsu CH, Sokoloff M, Krouse RS, Gibson BA, Nagle RB, Parnes HL, Cordova C, Chow HS. Bioactivity and prostate tissue distribution of metformin in a preprostatectomy prostate cancer cohort. Eur J Cancer Prev. 2017 Jul 7. doi: 10.1097/CEJ.0000000000000394. [Epub ahead of print] (PMID: 28692586)



Terri E. Jones, MD, BS (AP/CP)

jonest12@upmc.edu

Medical/Graduate School: University of Pittsburgh School of Medicine, Pittsburgh, PA (2017)

Planned Fellowship: Undecided

Current Research: Gyne and Breast, Hematopathology

Hobbies/Interests: Baking, cooking, writing, filmmaking

Lauren Skvarca, MD, PhD (AP/CP)

brillil2@upmc.edu



Medical/Graduate School: University of Pittsburgh School of Medicine, Pittsburgh, PA (2017)

Planned Fellowship: Placenta/Perinatal

Current Research: Relationship between hypertensive disorders during pregnancy and long term consequences for renal and cardiovascular health

Hobbies/Interests: Playing with my kids, hiking, exploring PA parks

Recent Publication: Skrypnyk NI¹, Sanker S², Skvarca LB², Novitskaya T¹, Woods C², Chiba T^{1,3}, Patel K¹, Goldberg ND², McDermott L⁴, Vinson PN⁵, Calcutt MW⁶, Huryn DM⁴, Verneti LA⁷, Vogt A^{7,8}, Hukriede NA^{2,9}, de Caestecker MP^{10,3} Delayed treatment with PTBA analogs reduces postinjury renal fibrosis after kidney injury. Am J Physiol Renal Physiol. 2016 Apr 15;310(8):F705-F716. doi: 10.1152/ajprenal.00503.2015. Epub 2015 Dec 9. (PMID: 26661656)

Swikrity Upadhyay Baskota, MBBS, MD (AP/CP)

upadhyaybaskotas@upmc.edu



Medical/Graduate School: MBBS - Kathmandu University/ MD Pathology – NAMS, Kathmandu, Nepal (2009/2014)

Planned Fellowship: Undecided

Hobbies/Interests: Trekking, Traveling, and Cooking

Recent Publication: Scurry J¹, Baskota SU. HPV-Associated Atypical Mitotic Figures in Squamous Intraepithelial Lesions of the Lower Female Genital Tract. J Low Genit Tract Dis. 2016 Apr;20(2):165-8. doi: 10.1097/LGT.0000000000000172. (PMID: 26735147)