

**University of Pittsburgh Medical Center  
Department of Pathology  
2016-2017 Residents**

**PGY-4**

**Alicia Hunt, MD (AP/CP)  
Chief Resident**

[huntam3@upmc.edu](mailto:huntam3@upmc.edu)



**Medical School:** University of Oklahoma College of Medicine, Oklahoma City, OK (2012)

**Fellowship:** Molecular Pathology

**Planned Fellowship:** Hematopathology

**Current Research:** MGMT expression in glioblastoma

**Hobbies/ Interests:** Ballroom and swing dancing, choral singing, piano, gardening

**Recent Publication:** Hunt AM, Shallenberger W, Ten Eyck SP, Craig FE. Use of internal control T-cell populations in the flow cytometric evaluation for T-cell neoplasms. Cytometry B Clin Cytom. 2015 Nov 3. [Epub ahead of print] (PMID: [26525599](https://pubmed.ncbi.nlm.nih.gov/26525599/))

**Dane C. Olevian, MD (AP/CP)**

[oleviand@upmc.edu](mailto:oleviand@upmc.edu)



**Medical School:** University of Pittsburgh School of Medicine, Pittsburgh, PA (2013)

**Planned Fellowships:** Surgical Pathology, GI Pathology

**Current Research:** Colon Cancer

**Hobbies/ Interests:** Buying and Selling Rare Coins, Paper Money, and Precious Metals

**Recent Publication:** Olevian DC, Nikiforova MN, Chiose S, Sun W, Bahary N, Kuan SF, Pai RK. Colorectal poorly differentiated neuroendocrine carcinomas frequently exhibit BRAF mutations and are associated with poor overall survival. Hum Pathol. 2016 Mar; 49: 124-34. (PMID: [26826419](https://pubmed.ncbi.nlm.nih.gov/26826419/))



**Stell D. Patadji, MD (AP/CP)**

[patadijsd@upmc.edu](mailto:patadijsd@upmc.edu)

**Medical School:** University of Vermont College of Medicine, Burlington, VT (2013)

**Planned Fellowships:** Cytology, Surgical Pathology

**Current Research:** Atypical Glandular Cells on Pap Smear

**Hobbies/ Interests:** Dancing, cooking



**Martina Pejchal, MD, PhD (AP/CP)**

[pejchalm@upmc.edu](mailto:pejchalm@upmc.edu)

**Medical/Graduate School:** Northwestern University School of Medicine, Chicago, IL (2013)

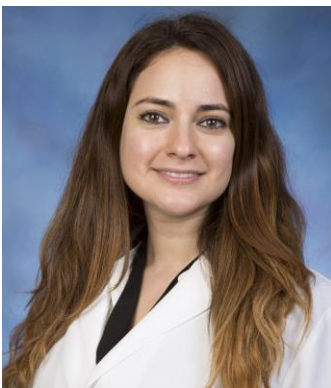
**Planned Fellowships:** Cytopathology, GI Pathology

**Current Research:** Candida esophagitis

**Hobbies/ Interests:** Teaching

**Recent Publication:** Izumo M, Pejchal M, Schook AC, Lange RP, Walisser JA, Sato TR, Wang X, Bradfield CA, Takahashi JS. Differential effects of light and feeding on circadian organization of peripheral clocks in a forebrain Bmal1 mutant. Elife. 2014 Dec 19; 3. (PMID: [25525750](https://pubmed.ncbi.nlm.nih.gov/25525750/))

### **PGY-3**



**Lama Farchoukh, MD (AP/CP)**  
**Chief Resident**

[lama.farchoukh@upmc.edu](mailto:lama.farchoukh@upmc.edu)

**Medical School:** American University of Beirut, Beirut, Lebanon (2009)

**Planned Fellowships:** Cytopathology, GI Pathology

**Current Research:** Prostate cancer, microsatellite instability in colorectal carcinoma, digital imaging for pathology, diabetes metabolism

**Hobbies/ Interests:** Traveling

**Recent Publication:** Michaliszyn SF, Lee S, Bacha F, Tfayli H, Farchoukh L, Mari A, Ferrannini E, Arslanian S. Differences in  $\beta$ -cell function and insulin secretion in Black vs. White obese adolescents: do incretin hormones play a role? Pediatr Diabetes. 2016 Jan 22. (PMID: [26799689](https://pubmed.ncbi.nlm.nih.gov/26799689/))

**Michelle Heayn, MD, PhD (AP/CP)**  
**Chief Resident**

[heaynm@upmc.edu](mailto:heaynm@upmc.edu)



**Medical/Graduate School:** Temple University School of Medicine, Philadelphia, PA (2014)

**Planned Fellowship:** Gynecological/ Breast Pathology

**Current Research:** GI neuroendocrine tumors, computer aided diagnosis

**Hobbies/ Interests:** Crafting (sewing, knitting, etc), reading

**Recent Publication:** Noel J, Wang H, Hong N, Tao J, Sorokina E, Debolt K, Heayn M, et al. PECAM-1 and caveolae form the mechanosensing complex necessary for NOX2 activation and angiogenic signaling with stopped flow in pulmonary endothelium. Am J Physiol Lung Cell Mol Physiol 2013; 305(11): L805-18.(PMID [24077950](https://pubmed.ncbi.nlm.nih.gov/24077950/))

**Dinesh Pradhan, MD, MBBS (AP/CP)**

[pradhand@upmc.edu](mailto:pradhand@upmc.edu)



**Medical School:** Gauhati Medical College, Guwahati, Assam, India (2004)

**Planned Fellowship:** Dermatopathology

**Hobbies/ Interests:** Traveling, Classical music, Cricket

**Recent Publication:** Pradhan D, Li Z, Ocque R, Patadji S, Zhao C. Clinical significance of atypical glandular cells in Pap tests: An analysis of more than 3000 cases at a large academic women's center. Cancer Cytopathol. 2016 Apr 26. [Epub ahead of print] (PMID: [27115423](https://pubmed.ncbi.nlm.nih.gov/27115423/))

**Jansen Seheult, MB BCh, MSc (CP only)**  
**Chief Resident**

[seheultj@upmc.edu](mailto:seheultj@upmc.edu)



**Medical School:** Royal College of Surgeons in Ireland, Dublin, Ireland (2011)

**Graduate School:** Trinity College Dublin, Dublin, Ireland (2014)

**Planned Fellowship:** Transfusion Medicine

**Research Interests:** Direct oral anticoagulants, lupus anticoagulant testing, test utilization, whole blood transfusion, LC-MS/MS method development

**Hobbies/ Interests:** Cricket, soccer, tennis, golf, sitar

**Recent Publication:** Seheult JN, Triulzi DJ, Yazer MH. I am the 9%: Making the case for whole-blood platelets. Transfus Med. 2016 May 12. [Epub ahead of print] (PMID: [27170206](https://pubmed.ncbi.nlm.nih.gov/27170206/))

**Michelle Stram, MD, ScM (AP/CP)**

[strammn@upmc.edu](mailto:strammn@upmc.edu)



**Medical School:** State University of New York at Upstate Medical University, Syracuse, NY (2014)

**Graduate School:** Johns Hopkins School of Public Health, Baltimore, MD (2008)

**Planned Fellowship:** Forensic Pathology

**Current Research:** Clear cell carcinoma of the endometrium and its mimics; the use of qPCR for HSV1 in the evaluation of respiratory specimens

**Hobbies/ Interests:** working out, trying vegetarian restaurants

**Christopher Suciu, MD, MS (AP/CP)**

[suciucn@upmc.edu](mailto:suciucn@upmc.edu)



**Medical/Graduate School:** Tulane University School of Medicine, New Orleans, LA (2014)

**Planned Fellowships:** Neuropathology, Molecular Pathology

**Current Research:** Use of qPCR for HSV1 in the evaluation of respiratory specimens

**Hobbies/ Interests:** Music, sports

**Recent Publication:** Williams L, Wong K, Stewart A, Suciu C, Gaikwad S, et al. Behavioral and physiological effects of RDX on adult zebrafish. *Comp Biochem Physiol C Toxicol Pharmacol* 2012; 155(1): 33-8. (PMID [21382508](https://pubmed.ncbi.nlm.nih.gov/21382508/))

**Jennifer Yoest, MD (AP/CP)**

[yoestjm@upmc.edu](mailto:yoestjm@upmc.edu)



**Medical School:** University of Pittsburgh School of Medicine, Pittsburgh, PA (2014)

**Planned Fellowship:** Molecular Pathology

**Current Research:** Immune Checkpoint Inhibitor therapy and Autoimmune Adverse Events; HGVS variant calling in NGS sequencing; effects of decalcification on breast cancer biomarker immunohistochemistry and Her2 FISH results

**Hobbies/ Interests:** sewing, cooking, crafting, violin

## PGY-2



**Dayne Ashman, MD (AP/CP)**

[ashmand@upmc.edu](mailto:ashmand@upmc.edu)

**Medical School:** University of the West Indies, Kingston, Jamaica (2011)

**Planned Fellowship:** Gynecological/ Breast Pathology

**Hobbies/ Interests:** Soccer

**Nicholas Barasch, MD, MS (AP/CP)**

[baraschn@upmc.edu](mailto:baraschn@upmc.edu)



**Medical/Graduate School:** Stony Brook School of Medicine, Stony Brook, New York (2015)

**Planned Fellowship:** Head and Neck Pathology, Cytopathology

**Current Research:** Head and Neck Pathology, Informatics

**Hobbies/ Interests:** Hiking, sailing, biking, travel, cooking

**Recent Publication:** Daehn I, Casalena G, Zhang T, Shi S, Fenninger F, Barasch N, Yu L, D'Agati V, Schlondorff D, Kriz W, Haraldsson B, Bottinger EP. Endothelial

mitochondrial oxidative stress determines podocyte depletion in segmental glomerulosclerosis. J Clin Invest.

2014 Apr; 124(4): 1608-21. Epub 2014 Mar 3. (PMID: [24590287](https://pubmed.ncbi.nlm.nih.gov/24590287/))

**Shweta Bhavsar, MBBS, MD (AP/CP)**

-



**Medical/Graduate School:** B.J Medical College, Pune, India (2007)

**Planned Fellowship:** Hematopathology, Gynecological/ Breast Pathology

**Hobbies/ Interests:** Music, singing, dancing

**Recent Publication:** Agale SV, Bhavsar S, Choudhury B, Manohar V. Isolated intramedullary spinal cord cysticercosis. Asian J Neurosurg. 2012 Apr; 7(2): 90-2. (PMID: [22870160](https://pubmed.ncbi.nlm.nih.gov/22870160/))



**Sarah Booker Hugar, MD (AP/CP)**

[bookerse@upmc.edu](mailto:bookerse@upmc.edu)

**Medical School:** Emory University School of Medicine, Atlanta, GA (2015)

**Planned Fellowship:** Gynecological/ Breast Pathology

**Current Research:** Breast pathology project with Drs. Clark and Dabbs investigating FEA (Flat Epithelial Atypia)

**Hobbies/ Interests:** Long-distance running, walking my dog Jack, hiking/ biking/ kayaking/ camping/ playing outside, watching UGA football



**Li Liu, MD, PhD (CP only)**

[liul4@upmc.edu](mailto:liul4@upmc.edu)

**Medical School:** China Medical University, Shenyang, China (2006)

**Graduate School:** Northwestern University, Chicago, IL

**Planned Fellowship:** Molecular Pathology

**Hobbies/ Interests:** Reading, spending time with children

**Recent Publication:** Liu L, Tamama K, Peck-Palmer OM. Selenium overload. Clin. Chem. 2016; 62: 658. (PMID: [27022127](https://pubmed.ncbi.nlm.nih.gov/27022127/))



**Oscar Francisco Lopez Nunez, MD (AP/CP)**

[lopeznunezof@upmc.edu](mailto:lopeznunezof@upmc.edu)

**Medical School:** Universidad Dr. Jose Matias Delgado, Escuela de Medicina, Antiguo Cuscatlan, El Salvador (2012)

**Planned Fellowship:** Pediatric Pathology

**Hobbies/ Interests:** Reading, bonsai gardening, jogging

**Daniel Marker, MD, PhD (AP/CP)**

[markerdf@upmc.edu](mailto:markerdf@upmc.edu)



**Medical School:** University of Rochester, Rochester, NY (2015)

**Planned Fellowship:** Undecided

**Research:** Neuroimmunology

**Hobbies/ Interests:** Ultimate Frisbee, Woodworking

**Recent Publication:** Puccini JM, Marker DF, Fitzgerald T, Barbieri J, Kim CS, Miller-Rhodes P, Lu SM, Dewhurst S, Gelbard HA. Leucine-rich repeat kinase 2 modulates neuroinflammation and neurotoxicity in models of human immunodeficiency virus 1-associated neurocognitive disorders. *J Neurosci.* 2015 Apr 1; 35(13): 5271-83. (PMID: [25834052](https://pubmed.ncbi.nlm.nih.gov/25834052/))

**Eric Statz, MD (AP/CP)**

[statzec@upmc.edu](mailto:statzec@upmc.edu)



**Medical School:** University of Wisconsin School of Medicine and Public Health, Madison, WI (2015)

**Planned Fellowship:** Undecided, possibly: Surgical Pathology, Gynecological/ Breast Pathology, GU Pathology, GI Pathology

**Current Research:** Digital pathology, surgical pathology

**Hobbies/ Interests:** Cooking, running, biking, playing with my beagle, travel

**Recent Publication:** Willette AA, Johnson SC, Birdsill AC, Sager MA, Christian B, Baker LD, Craft S, Oh J, Statz E, Hermann BP, Jonaitis EM, Kosciak RL, La Rue A, Asthana S, Bendlin BB. Insulin resistance predicts brain amyloid deposition in late middle-aged adults. *Alzheimers Dement.* 2015 May; 11(5): 504-510.e1. (PMID: [25043908](https://pubmed.ncbi.nlm.nih.gov/25043908/))

**Bryan Stevens, MD (AP/CP)**

[stevensba@upmc.edu](mailto:stevensba@upmc.edu)



**Medical School:** University of Toledo College of Medicine, Toledo, OH (2015)

**Planned Fellowship:** Medical Microbiology

**Hobbies/ Interests:** Skiing, Running, Hiking

**Recent Publication:** Kemski MM, Stevens B, Rappleye CA. Spectrum of T-DNA integrations for insertional mutagenesis of *Histoplasma capsulatum*. *Fungal Biol.* 2013 Jan; 117(1): 41-51. (PMID: [23332832](https://pubmed.ncbi.nlm.nih.gov/23332832/))

## PGY-1

### **Eric Carlsen, MD, PhD (AP/CP)**

[carlsened@upmc.edu](mailto:carlsened@upmc.edu)



**Medical School:** University of Texas Medical Branch, Galveston, TX (2016)

**Planned Fellowship:** Hematopathology

**Current Research:** Innate immunity, flow cytometry

**Hobbies/ Interests:** cycling, cooking, the outdoors, music

**Recent Publication:** Chen F, Cao A, Yao S, Evans-Marin HL, Liu H, Wu W, Carlsen ED, Dann SM, Soong L, Sun J, Zhao Q, Cong Y. mTOR Mediates IL-23 Induction of Neutrophil IL-17 and IL-22 Production. J Immunol. 2016 May 15; 196(10): 4390-9. (PMID: [27067005](https://pubmed.ncbi.nlm.nih.gov/27067005/))

### **Tanner Freeman, MD, PhD (AP/CP)**

[freemantj@upmc.edu](mailto:freemantj@upmc.edu)



**Medical/Graduate School:** Vanderbilt Medical School, Nashville, TN (2016)

**Planned Fellowship:** Molecular, Gastrointestinal Pathology

**Current Research:** Signaling pathways associated with epithelialization

**Hobbies/ Interests:** Running, Notre Dame Football, Traveling the Bourbon Trail with my spouse

**Recent Publication:** Barrett CW, Reddy VK, Short SP, Motley AK, Lintel MK, Bradley AM, Freeman T, Vallance J, Ning W, Parang B, Poindexter SV, Fingleton B, Chen X, Washington MK, Wilson KT, Shroyer NF, Hill KE, Burk RF, Williams CS. Selenoprotein P influences colitis-induced tumorigenesis by mediating stemness and oxidative damage. J Clin Invest. 2015 Jul 1; 125(7): 2646-60. (PMID: [26053663](https://pubmed.ncbi.nlm.nih.gov/26053663/))





**Claudia M. Salgado, MD, PhD (AP/CP)**

[salgadocm2@upmc.edu](mailto:salgadocm2@upmc.edu)

**Medical/Graduate School:** Federal University of Juiz de Fora, Juiz de Fora, Brazil (1992)

**Current Research:** Congenital melanocytic lesions

**Hobbies/ Interests:** Traveling, cooking, hiking, running

**Recent Publication:** Salgado CM, Basu D, Reyes-Múgica M. NRAS Status in Giant Melanocytic Nevus With Metastatic Melanoma. *Am J Dermatopathol.* 2016 Mar 29. [Epub ahead of print] (PMID: [27043334](https://pubmed.ncbi.nlm.nih.gov/27043334/))



**John M. Skaugen, MD (AP/CP)**

[skaugenim@upmc.edu](mailto:skaugenim@upmc.edu)

**Medical School:** University of Texas Health Sciences Center at Houston McGovern Medical School, Houston, TX (2016)

**Hobbies/ Interests:** Reading, movies, cooking, tennis



**Jacob A. Smith, MD (AP/CP)**

[smithja15@upmc.edu](mailto:smithja15@upmc.edu)

**Medical School:** Paul L. Foster School of Medicine Texas Tech University Health Sciences Center, El Paso, TX (2016)

**Planned Fellowship:** Undecided

**Hobbies/ Interests:** Brazilian Jiu-Jitsu, video games, reading, finance

**Recent Publication:** Li J, Arévalo MT, Chen Y, Posadas O, Smith JA, Zeng M. Intranasal immunization with influenza antigens conjugated with cholera toxin subunit B stimulates broad spectrum immunity against influenza viruses. *Hum Vaccin Immunother.* 2014; 10(5): 1211-20. (PMID: [24632749](https://pubmed.ncbi.nlm.nih.gov/24632749/))